

PRODAVI SA

**BROWN
NICK**
Brown Egg Layers



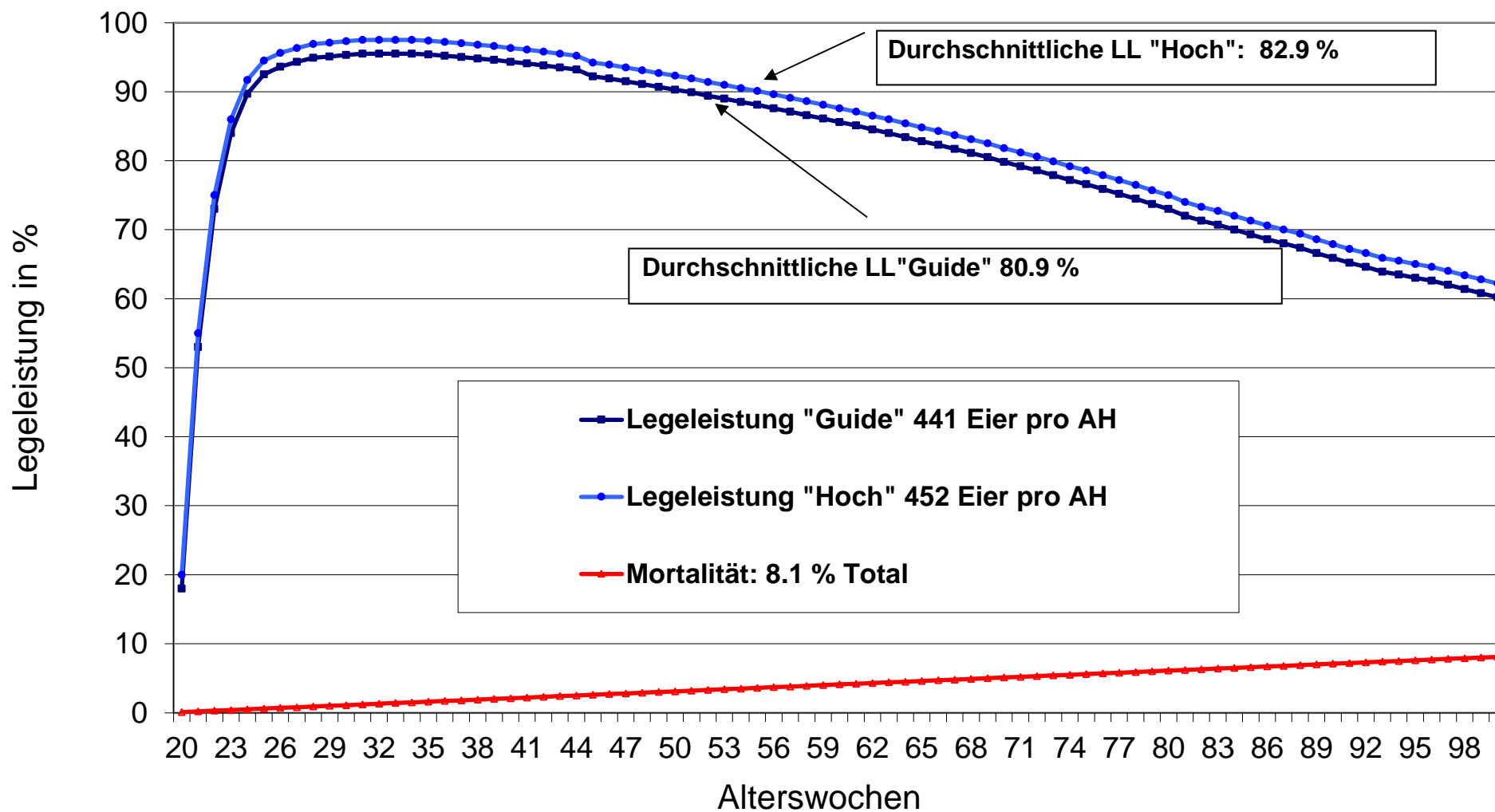
Prodavi SA, Sentmatte 1, CH-6247 Schötz
Tel. 041 925 85 60
Fax.041 925 85 75
www.prodavi.ch, info@prodavi.ch

Erfassung des Futterkonsums				
AW	Futterkonsum "tief" mit durchschnittlich 115.8 Gramm	Futterkonsum "hoch" mit durchschnittlich 121.6 Gramm	effektiver Futterkonsum	Kommentar
Korr.in %	Eingabe für Graphik	1.05		
18	78.0	81.9		
19	80.0	84.0		
20	88.0	92.4		
21	91.0	95.6		
22	101.0	106.1		
23	106.0	111.3		
24	110.0	115.5		
25	118.0	123.9		
26	118.0	123.9		
27	118.0	123.9		
28	118.0	123.9		
29	118.0	123.9		
30	118.0	123.9		
31	118.0	123.9		
32	118.0	123.9		
33	118.0	123.9		
34	118.0	123.9		
35	118.0	123.9		
36	118.0	123.9		
37	118.0	123.9		
38	118.0	123.9		
39	118.0	123.9		
40	118.0	123.9		
41	118.0	123.9		
42	118.0	123.9		
43	118.0	123.9		
44	118.0	123.9		
45	118.0	123.9		
46	119.0	125.0		
47	119.0	125.0		
48	119.0	125.0		
49	119.0	125.0		
50	120.0	126.0		
51	120.0	126.0		
52	120.0	126.0		
53	120.0	126.0		
54	120.0	126.0		
55	120.0	126.0		
56	120.0	126.0		
57	120.0	126.0		
58	120.0	126.0		
59	120.0	126.0		
60	120.0	126.0		
61	120.0	126.0		
62	120.0	126.0		
63	120.0	126.0		
64	120.0	126.0		
65	120.0	126.0		
66	120.0	126.0		
67	120.0	126.0		
68	120.0	126.0		
69	120.0	126.0		
70	120.0	126.0		
71	120.0	126.0		
72	120.0	126.0		
Summe	6368.0	6686.4		
Mittelwert	115.8	121.6		

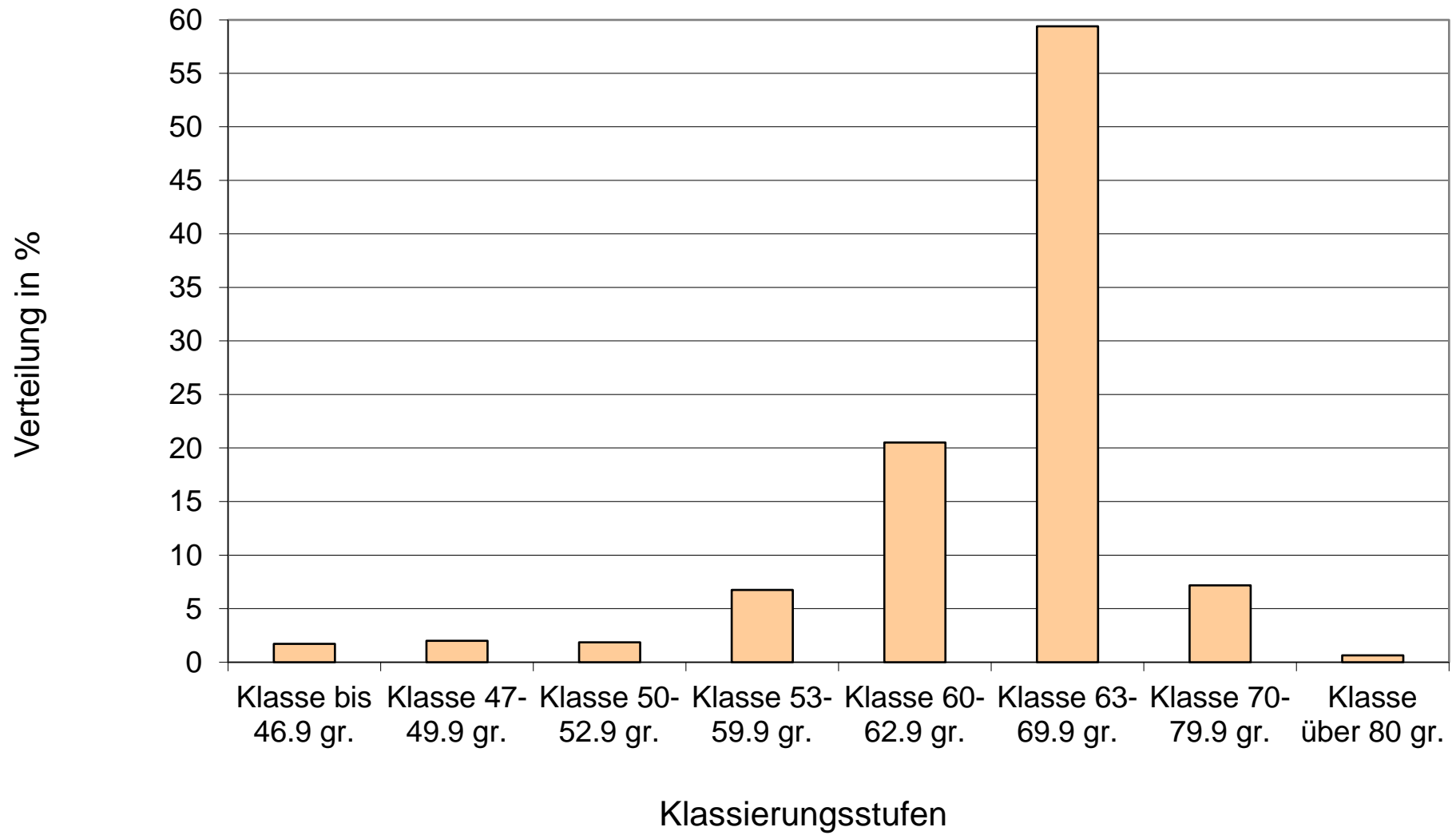
Leistungsdaten: H&N BrownNick				Aktualisiert: Juni 19 / MW			Management Guide"Brown Nick Alternativ 2018"		
	Ab 20. Alterswoche			1000	Stück		Eingabe für Graphik:		
	Bis 72. Alterswoche			919	Stück		Berechnung		
	LL Guide	LL Hoch	Mortalität	Mortalität	LL Guide	LL Hoch	Bestandes- korrektur	Futtertage: Mittel Anfang u. Ende berechnet!	Eizahl pro AH hoch , kumuliert
Korr.		2.0	0.1				Spalte "E"		
AW	in %	in %	in %	in Stück	in Stück	in Stück	in Stück	FT	
20	18.0	20.0	0.10	1.0	1'259	1'399	999	6'997	1.26
21	53.0	55.0	0.20	2.0	3'704	3'844	998	6'990	4.96
22	73.0	75.0	0.30	3.0	5'097	5'237	997	6'983	10.06
23	84.0	86.0	0.40	4.0	5'859	5'999	996	6'976	15.92
24	89.7	91.7	0.50	5.0	6'251	6'390	995	6'969	22.17
25	92.5	94.5	0.60	6.0	6'439	6'579	994	6'962	28.61
26	93.6	95.6	0.70	7.0	6'509	6'649	993	6'955	35.12
27	94.3	96.3	0.80	8.0	6'551	6'690	992	6'948	41.67
28	94.9	96.9	0.90	9.0	6'587	6'725	991	6'941	48.26
29	95.1	97.1	1.00	10.0	6'594	6'732	990	6'934	54.85
30	95.3	97.3	1.10	11.0	6'601	6'739	989	6'927	61.45
31	95.5	97.5	1.20	12.0	6'608	6'747	988	6'920	68.06
32	95.5	97.5	1.30	13.0	6'601	6'740	987	6'913	74.66
33	95.5	97.5	1.40	14.0	6'595	6'733	986	6'906	81.26
34	95.5	97.5	1.50	15.0	6'588	6'726	985	6'899	87.85
35	95.4	97.4	1.60	16.0	6'574	6'712	984	6'892	94.42
36	95.2	97.2	1.70	17.0	6'554	6'692	983	6'885	100.97
37	95.0	97.0	1.80	18.0	6'534	6'671	982	6'878	107.51
38	94.8	96.8	1.90	19.0	6'513	6'651	981	6'871	114.02
39	94.6	96.6	2.00	20.0	6'493	6'630	980	6'864	120.51
40	94.3	96.3	2.10	21.0	6'466	6'603	979	6'857	126.98
41	94.1	96.1	2.20	22.0	6'445	6'582	978	6'850	133.42
42	93.8	95.8	2.30	23.0	6'418	6'555	977	6'843	139.84
43	93.5	95.5	2.40	24.0	6'391	6'528	976	6'836	146.23
44	93.2	95.2	2.50	25.0	6'364	6'501	975	6'829	152.60
45	92.2	94.2	2.60	26.0	6'289	6'426	974	6'822	158.89
46	91.9	93.9	2.70	27.0	6'263	6'399	973	6'815	165.15
47	91.5	93.5	2.80	28.0	6'229	6'365	972	6'808	171.38
48	91.1	93.1	2.90	29.0	6'195	6'331	971	6'801	177.57
49	90.7	92.7	3.00	30.0	6'162	6'298	970	6'794	183.74
50	90.3	92.3	3.10	31.0	6'128	6'264	969	6'787	189.86
51	89.9	91.9	3.20	32.0	6'095	6'230	968	6'780	195.96
52	89.4	91.4	3.30	33.0	6'055	6'190	967	6'773	202.01
53	89.0	91.0	3.40	34.0	6'021	6'157	966	6'766	208.03
54	88.5	90.5	3.50	35.0	5'981	6'116	965	6'759	214.02
55	88.1	90.1	3.60	36.0	5'948	6'083	964	6'752	219.96
56	87.6	89.6	3.70	37.0	5'908	6'043	963	6'745	225.87
57	87.1	89.1	3.80	38.0	5'868	6'003	962	6'738	231.74
58	86.6	88.6	3.90	39.0	5'829	5'963	961	6'731	237.57
59	86.1	88.1	4.00	40.0	5'789	5'923	960	6'724	243.36
60	85.6	87.6	4.10	41.0	5'749	5'884	959	6'717	249.11
61	85.1	87.1	4.20	42.0	5'710	5'844	958	6'710	254.82

Leistungsdaten: H&N BrownNick				Aktualisiert: Juni 19 / MW			Management Guide"Brown Nick Alternativ 2018"		
	Ab 20. Alterswoche			1000	Stück		Eingabe für Graphik:		
	Bis 72. Alterswoche			919	Stück		Berechnung		
	LL Guide	LL Hoch	Mortalität	Mortalität	LL Guide	LL Hoch	Bestandes- korrektur	Futtertage: Mittel Anfang u. Ende berechnet!	Eizahl pro AH hoch , kumuliert
Korr.		2.0	0.1				Spalte "E"		
AW	in %	in %	in %	in Stück	in Stück	in Stück	in Stück	FT	
62	84.5	86.5	4.30	43.0	5'664	5'798	957	6'703	260.48
63	84.0	86.0	4.40	44.0	5'624	5'758	956	6'696	266.11
64	83.4	85.4	4.50	45.0	5'578	5'712	955	6'689	271.68
65	82.8	84.8	4.60	46.0	5'532	5'666	954	6'682	277.22
66	82.3	84.3	4.70	47.0	5'493	5'627	953	6'675	282.71
67	81.7	83.7	4.80	48.0	5'447	5'581	952	6'668	288.16
68	81.1	83.1	4.90	49.0	5'402	5'535	951	6'661	293.56
69	80.5	82.5	5.00	50.0	5'356	5'489	950	6'654	298.91
70	79.8	81.8	5.10	51.0	5'304	5'437	949	6'647	304.22
71	79.2	81.2	5.20	52.0	5'258	5'391	948	6'640	309.48
72	78.6	80.6	5.30	53.0	5'219	5'351	947	6'640	314.69
73	77.9	79.9	5.40	54.0	5'167	5'299	946	6'633	319.86
74	77.2	79.2	5.50	55.0	5'115	5'247	945	6'626	324.98
75	76.6	78.6	5.60	56.0	5'070	5'202	944	6'619	330.05
76	75.9	77.9	5.70	57.0	5'018	5'150	943	6'612	335.06
77	75.2	77.2	5.80	58.0	4'967	5'099	942	6'605	340.03
78	74.5	76.5	5.90	59.0	4'915	5'047	941	6'598	344.95
79	73.7	75.7	6.00	60.0	4'857	4'989	940	6'591	349.80
80	73.0	75.0	6.10	61.0	4'806	4'938	939	6'584	354.61
81	72.0	74.0	6.20	62.0	4'735	4'867	938	6'577	359.34
82	71.3	73.3	6.30	63.0	4'684	4'815	937	6'570	364.03
83	70.7	72.7	6.40	64.0	4'640	4'771	936	6'563	368.67
84	70.0	72.0	6.50	65.0	4'589	4'720	935	6'556	373.26
85	69.3	71.3	6.60	66.0	4'538	4'669	934	6'549	377.79
86	68.6	70.6	6.70	67.0	4'487	4'618	933	6'542	382.28
87	68.0	70.0	6.80	68.0	4'443	4'574	932	6'535	386.73
88	67.4	69.4	6.90	69.0	4'400	4'530	931	6'528	391.13
89	66.6	68.6	7.00	70.0	4'343	4'473	930	6'521	395.47
90	65.9	67.9	7.10	71.0	4'352	4'484	929	6'605	399.82
91	65.2	67.2	7.20	72.0	4'302	4'434	928	6'598	404.12
92	64.6	66.6	7.30	73.0	4'257	4'389	927	6'591	408.38
93	63.9	65.9	7.40	74.0	4'207	4'339	926	6'584	412.59
94	63.5	65.5	7.50	75.0	4'176	4'308	925	6'577	416.76
95	63.0	65.0	7.60	76.0	4'139	4'270	924	6'570	420.90
96	62.6	64.6	7.70	77.0	4'108	4'239	923	6'563	425.01
97	62.0	64.0	7.80	78.0	4'064	4'196	922	6'556	429.07
98	61.4	63.4	7.90	79.0	4'021	4'152	921	6'549	433.09
99	60.8	62.8	8.00	80.0	3'977	4'108	920	6'542	437.07
100	60.2	62.2	8.10	81.0	3'934	4'064	919	6'535	441.01
Total	80.9	82.9	8.10	81	441'006	451'910		545'241	
	Legeleistung pro AH / Stk.				441	452			

Legeleistungskurve

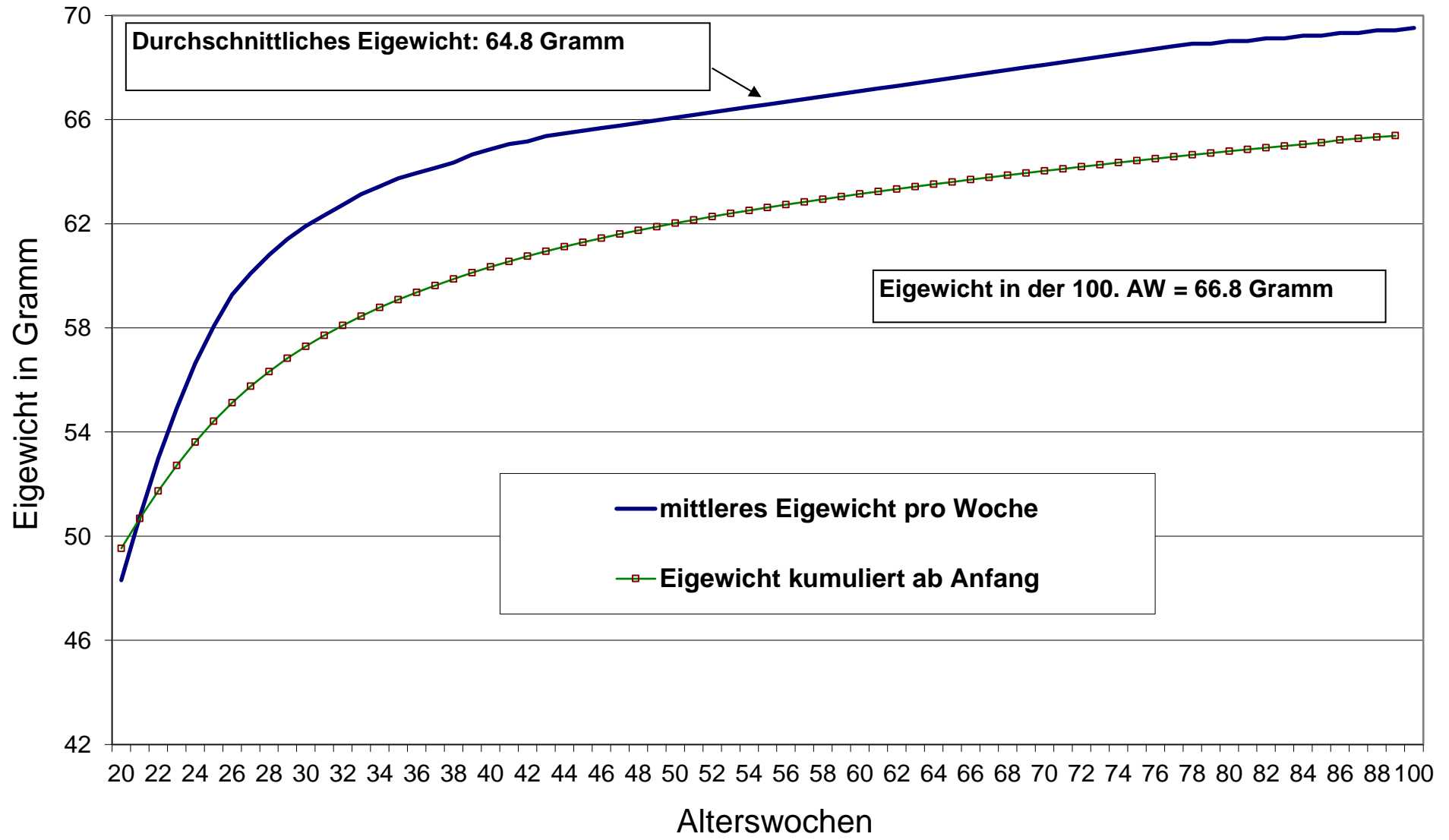


Anteil Eier pro Klassierung



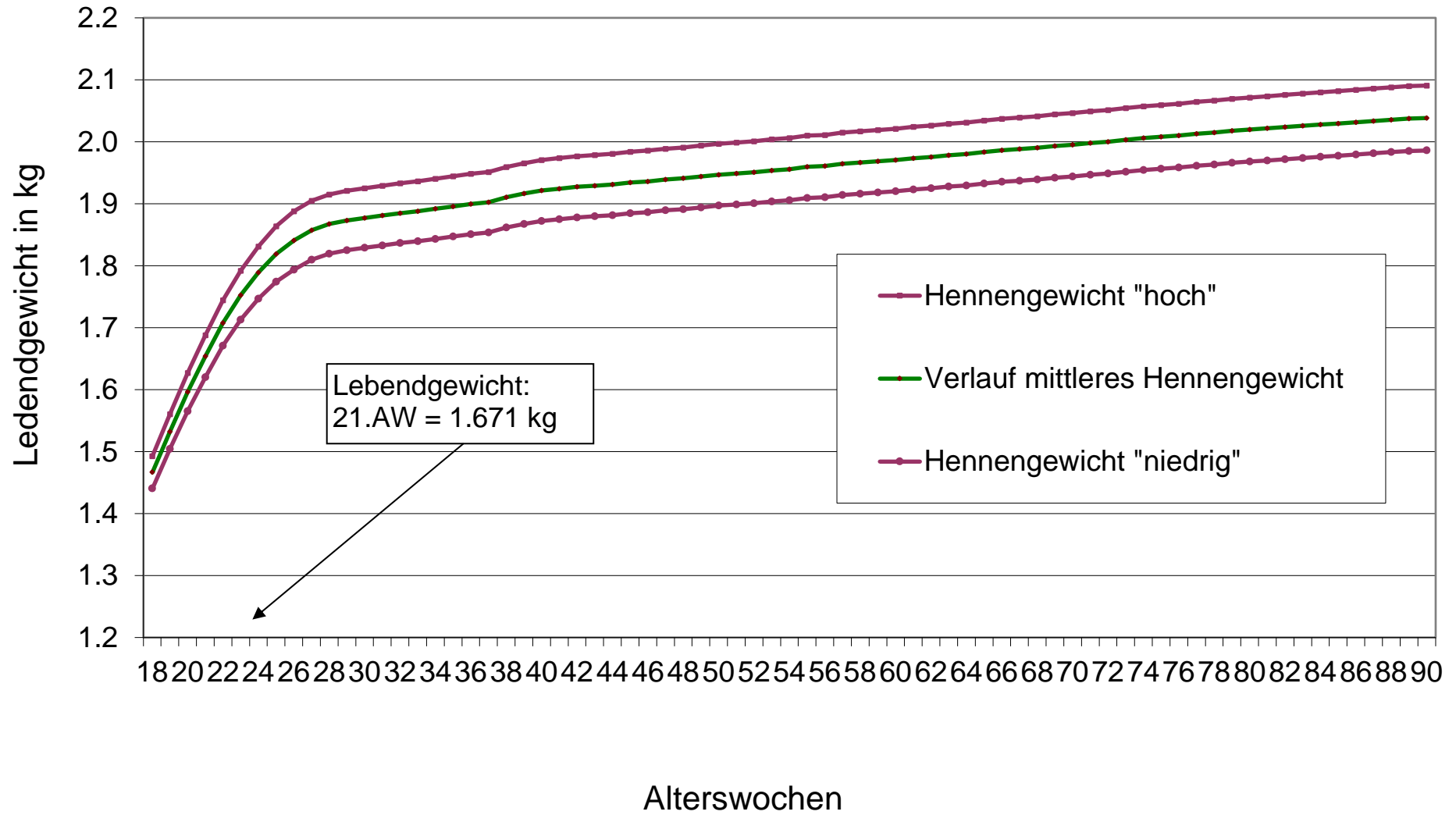
Leistungsdaten: H&N BrownNick				Aktualisiert: Juni 19 / MW									
AW	Eigewicht Original Brown Nick	mittleres Eigewicht pro Woche	Eigewicht kumuliert ab Anfang	Klasse XXS	Klasse XS	Klasse S	Klasse M	Klasse M	Klasse L 63	Klasse XL 70	Klasse XXL 80+gr	Kontrolle	
				bis 46.9 gr	47 bis 49.9 gr	50 bis 52.9 gr	53 bis 59.9 gr	60 bis 62.9 gr	63 bis 69.9 gr	70 bis 79.9 gr	80+gr		
Faktor				43.5	48.5	51.5	56.5	61.5	66.5	75.0	81.0		
Gramm				1.015									
				in %	in %	in %	in %	in %	in %	in %	in %	Total	
20	47.6	48.3	48.3	68.0	31.0	1.0	0.0	0.0	0.0	0.0	0.0	100.0	
21	50.0	50.8	49.5	36.0	44.0	18.0	2.0	0.0	0.0	0.0	0.0	100.0	
22	52.2	53.0	50.7	18.0	38.0	28.0	16.0	0.0	0.0	0.0	0.0	100.0	
23	54.1	54.9	51.7	8.0	22.0	32.0	32.0	6.0	0.0	0.0	0.0	100.0	
24	55.8	56.6	52.7	4.0	8.0	24.0	56.0	8.0	0.0	0.0	0.0	100.0	
25	57.2	58.1	53.6	2.0	6.0	14.0	55.0	21.0	2.0	0.0	0.0	100.0	
26	58.4	59.3	54.4	1.0	5.0	10.0	46.0	32.0	6.0	0.0	0.0	100.0	
27	59.2	60.1	55.1	1.0	4.0	5.0	42.0	40.0	8.0	0.0	0.0	100.0	
28	59.9	60.8	55.8	0.0	2.0	4.0	38.0	46.0	10.0	0.0	0.0	100.0	
29	60.5	61.4	56.3	0.0	1.0	4.0	29.0	56.0	10.0	0.0	0.0	100.0	
30	61.0	61.9	56.8	0.0	0.0	3.0	23.0	62.0	12.0	0.0	0.0	100.0	
31	61.4	62.3	57.3	0.0	0.0	2.0	18.0	66.0	14.0	0.0	0.0	100.0	
32	61.8	62.7	57.7	0.0	0.0	2.0	14.0	68.0	16.0	0.0	0.0	100.0	
33	62.2	63.1	58.1	0.0	0.0	2.0	10.0	70.0	18.0	0.0	0.0	100.0	
34	62.5	63.4	58.5	0.0	0.0	1.0	9.0	70.0	20.0	0.0	0.0	100.0	
35	62.8	63.7	58.8	0.0	0.0	1.0	7.0	69.0	23.0	0.0	0.0	100.0	
36	63.0	63.9	59.1	0.0	0.0	0.0	6.0	70.0	24.0	0.0	0.0	100.0	
37	63.2	64.1	59.4	0.0	0.0	0.0	5.0	68.0	26.0	1.0	0.0	100.0	
38	63.4	64.4	59.6	0.0	0.0	0.0	4.0	66.0	28.0	2.0	0.0	100.0	
39	63.7	64.7	59.9	0.0	0.0	0.0	3.0	63.0	32.0	2.0	0.0	100.0	
40	63.9	64.9	60.1	0.0	0.0	0.0	3.0	59.0	36.0	2.0	0.0	100.0	
41	64.1	65.1	60.3	0.0	0.0	0.0	3.0	52.0	43.0	2.0	0.0	100.0	
42	64.2	65.2	60.6	0.0	0.0	0.0	3.0	48.0	47.0	2.0	0.0	100.0	
43	64.4	65.4	60.8	0.0	0.0	0.0	3.0	44.0	50.0	3.0	0.0	100.0	
44	64.5	65.5	60.9	0.0	0.0	0.0	3.0	40.0	54.0	3.0	0.0	100.0	
45	64.6	65.6	61.1	0.0	0.0	0.0	3.0	36.0	58.0	3.0	0.0	100.0	
46	64.7	65.7	61.3	0.0	0.0	0.0	3.0	34.0	59.0	4.0	0.0	100.0	
47	64.8	65.8	61.4	0.0	0.0	0.0	3.0	32.0	60.0	5.0	0.0	100.0	
48	64.9	65.9	61.6	0.0	0.0	0.0	2.0	29.0	64.0	5.0	0.0	100.0	
49	65.0	66.0	61.7	0.0	0.0	0.0	2.0	26.0	67.0	5.0	0.0	100.0	
50	65.1	66.1	61.9	0.0	0.0	0.0	2.0	24.0	69.0	5.0	0.0	100.0	
51	65.2	66.2	62.0	0.0	0.0	0.0	2.0	21.0	71.0	6.0	0.0	100.0	
52	65.3	66.3	62.1	0.0	0.0	0.0	2.0	20.0	71.0	7.0	0.0	100.0	
53	65.4	66.4	62.3	0.0	0.0	0.0	2.0	19.0	72.0	7.0	0.0	100.0	
54	65.5	66.5	62.4	0.0	0.0	0.0	2.0	17.0	74.0	7.0	0.0	100.0	
55	65.6	66.6	62.5	0.0	0.0	0.0	2.0	15.0	76.0	7.0	0.0	100.0	
56	65.7	66.7	62.6	0.0	0.0	0.0	2.0	14.0	76.0	8.0	0.0	100.0	
57	65.8	66.8	62.7	0.0	0.0	0.0	2.0	12.0	78.0	8.0	0.0	100.0	
58	65.9	66.9	62.8	0.0	0.0	0.0	2.0	11.0	78.0	9.0	0.0	100.0	
59	66.0	67.0	62.9	0.0	0.0	0.0	2.0	10.0	79.0	9.0	0.0	100.0	
60	66.1	67.1	63.0	0.0	0.0	0.0	2.0	10.0	79.0	9.0	0.0	100.0	
61	66.2	67.2	63.1	0.0	0.0	0.0	2.0	9.0	79.0	10.0	0.0	100.0	
62	66.3	67.3	63.2	0.0	0.0	0.0	2.0	9.0	79.0	10.0	0.0	100.0	
63	66.4	67.4	63.3	0.0	0.0	0.0	2.0	8.0	80.0	10.0	0.0	100.0	
64	66.5	67.5	63.4	0.0	0.0	0.0	2.0	8.0	80.0	10.0	0.0	100.0	
65	66.6	67.6	63.5	0.0	0.0	0.0	2.0	7.0	80.0	11.0	0.0	100.0	
66	66.7	67.7	63.6	0.0	0.0	0.0	2.0	7.0	80.0	11.0	0.0	100.0	
67	66.8	67.8	63.7	0.0	0.0	0.0	2.0	7.0	80.0	11.0	0.0	100.0	
68	66.9	67.9	63.8	0.0	0.0	0.0	2.0	7.0	80.0	11.0	0.0	100.0	
69	67.0	68.0	63.9	0.0	0.0	0.0	2.0	6.0	80.0	12.0	0.0	100.0	
70	67.1	68.1	63.9	0.0	0.0	0.0	2.0	6.0	80.0	12.0	0.0	100.0	
71	67.2	68.2	64.0	0.0	0.0	0.0	2.0	6.0	80.0	12.0	0.0	100.0	
72	67.3	68.3	64.1	0.0	0.0	0.0	2.0	6.0	80.0	12.0	0.0	100.0	
73	67.4	68.4	64.2	0.0	0.0	0.0	2.0	5.0	81.0	11.0	1.0	100.0	
74	67.5	68.5	64.3	0.0	0.0	0.0	2.0	5.0	81.0	11.0	1.0	100.0	
75	67.6	68.6	64.3	0.0	0.0	0.0	2.0	5.0	81.0	11.0	1.0	100.0	
76	67.7	68.7	64.4	0.0	0.0	0.0	2.0	5.0	81.0	11.0	1.0	100.0	
77	67.8	68.8	64.5	0.0	0.0	0.0	2.0	5.0	81.0	11.0	1.0	100.0	
78	67.9	68.9	64.6	0.0	0.0	0.0	2.0	4.5	81.0	11.0	1.5	100.0	
79	67.9	68.9	64.6	0.0	0.0	0.0	2.0	4.5	81.0	11.0	1.5	100.0	
80	68.0	69.0	64.7	0.0	0.0	0.0	2.0	4.5	81.0	11.0	1.5	100.0	
81	68.0	69.0	64.8	0.0	0.0	0.0	2.0	4.5	81.0	11.0	1.5	100.0	
82	68.1	69.1	64.9	0.0	0.0	0.0	2.0	4.5	81.0	11.0	1.5	100.0	
83	68.1	69.1	64.9	0.0	0.0	0.0	2.0	4.5	81.0	11.0	1.5	100.0	
84	68.2	69.2	65.0	0.0	0.0	0.0	2.0	4.5	81.0	11.0	1.5	100.0	
85	68.2	69.2	65.1	0.0	0.0	0.0	2.0	4.5	81.0	11.0	1.5	100.0	
86	68.3	69.3	65.1	0.0	0.0	0.0	2.0	4.0	81.0	11.0	2.0	100.0	
87	68.3	69.3	65.2	0.0	0.0	0.0	2.0	4.0	81.0	11.0	2.0	100.0	
88	68.4	69.4	65.3	0.0	0.0	0.0	2.0	4.0	81.0	11.0	2.0	100.0	
89	68.4	69.4	65.3	0.0	0.0	0.0	2.0	4.0	81.0	11.0	2.0	100.0	
90	68.5	69.5	65.4	0.0	0.0	0.0	2.0	4.0	80.0	12.0	2.0	100.0	
91	68.5	69.5	65.4	0.0	0.0	0.0	2.0	4.0	80.0	12.0	2.0	100.0	
92	68.6	69.6	65.5	0.0	0.0	0.0	2.0	4.0	80.0	12.0	2.0	100.0	
93	68.6	69.6	65.5	0.0	0.0	0.0	2.0	4.0	80.0	12.0	2.0	100.0	
94	68.7	69.7	65.6	0.0	0.0	0.0	2.0	4.0	80.0	12.0	2.0	100.0	
95	68.7	69.7	65.6	0.0	0.0	0.0	2.5	4.0	78.0	13.0	2.5	100.0	
96	66.6	67.6	65.7	0.0	0.0	0.0	2.5	4.0	78.0	13.0	2.5	100.0	
97	66.6	67.6	65.7	0.0	0.0	0.0	2.5	4.0	78.0	13.0	2.5	100.0	
98	66.7	67.7	65.7	0.0	0.0	0.0	2.0	4.0	77.0	14.0	3.0	100.0	
99	66.7	67.7	65.7	0.0	0.0	0.0	2.0	4.0	77.0	14.0	3.0	100.0	
100	66.7	67.7	65.8	0.0	0.0	0.0	2.0	4.0	77.0	14.0	3.0	100.0	
Summe	5248.3	5327.0		138.0	161.0	151.0	546.5	1661.0	4810.0	581.0	51.5		
Anzahl	81	81		81	81	81	81	81	81	81	81		
	64.8	65.8		1.7	2.0	1.9	6.7	20.5	59.4	7.2	0.6	100.0	
Korrektur auf: 0				Klasse bis 46.9 gr.	Klasse 47-49.9 gr.	Klasse 50-52.9 gr.	Klasse 53-59.9 gr.	Klasse 60-62.9 gr.	Klasse 63-69.9 gr.	Klasse 70-79.9 gr.	Klasse über 80 gr.		
				1.7	2.0	1.9	6.7	20.5	59.4	7.2	0.6	100.0	

Eigewichtsentwicklung

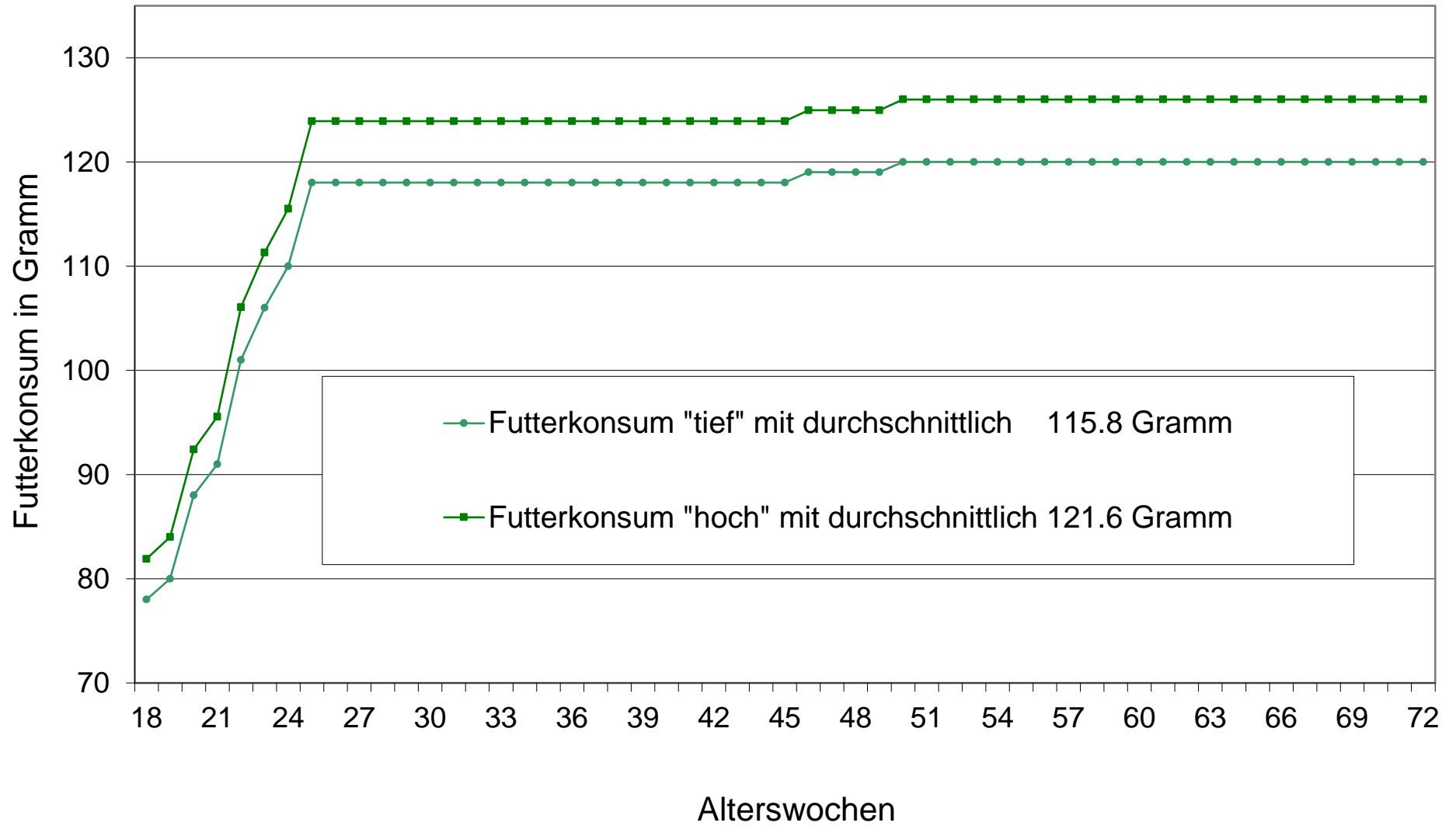


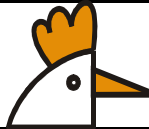
Leistungsdaten: H&N BrownNick			Aktualisiert: Juni 19 / MW			
Erfassung des Lebendgewichtes						
Eingabe für Graphik			Berechnung Mittel	Mittel B +C	Korrektur Niedrig	Korrektur
AW	Guide Brown Nick, Original	1.02	Verlauf mittleres Hennengewicht	Hennengewicht "hoch"	Hennengewicht "niedrig"	Faktor in %
18	1.478	1.508	1.467	1.493	1.441	3.50
19	1.545	1.576	1.532	1.560	1.504	3.60
20	1.611	1.643	1.596	1.627	1.565	3.80
21	1.671	1.704	1.654	1.688	1.620	4.00
22	1.727	1.762	1.708	1.744	1.671	4.20
23	1.774	1.809	1.752	1.792	1.713	4.40
24	1.813	1.849	1.789	1.831	1.747	4.60
25	1.845	1.882	1.819	1.863	1.774	4.80
26	1.869	1.906	1.840	1.888	1.793	5.00
27	1.886	1.924	1.857	1.905	1.810	5.00
28	1.896	1.934	1.867	1.915	1.819	5.00
29	1.902	1.940	1.873	1.921	1.825	5.00
30	1.906	1.944	1.877	1.925	1.829	5.00
31	1.910	1.948	1.881	1.929	1.833	5.00
32	1.914	1.952	1.885	1.933	1.836	5.00
33	1.917	1.955	1.888	1.936	1.839	5.00
34	1.921	1.959	1.892	1.940	1.843	5.00
35	1.925	1.964	1.896	1.944	1.847	5.00
36	1.929	1.968	1.900	1.948	1.851	5.00
37	1.932	1.971	1.903	1.951	1.854	5.00
38	1.940	1.979	1.910	1.959	1.861	5.00
39	1.946	1.985	1.916	1.965	1.867	5.00
40	1.951	1.990	1.921	1.971	1.872	5.00
41	1.954	1.993	1.924	1.974	1.875	5.00
42	1.957	1.996	1.927	1.977	1.878	5.00
43	1.959	1.998	1.929	1.979	1.880	5.00
44	1.961	2.000	1.931	1.981	1.882	5.00
45	1.964	2.003	1.934	1.984	1.884	5.00
46	1.966	2.005	1.936	1.986	1.886	5.00
47	1.969	2.008	1.939	1.989	1.889	5.00
48	1.971	2.010	1.941	1.991	1.891	5.00
49	1.974	2.013	1.944	1.994	1.894	5.00
50	1.977	2.017	1.947	1.997	1.897	5.00
51	1.979	2.019	1.949	1.999	1.899	5.00
52	1.981	2.021	1.951	2.001	1.901	5.00
53	1.984	2.024	1.954	2.004	1.904	5.00
54	1.986	2.026	1.956	2.006	1.906	5.00
55	1.990	2.030	1.960	2.010	1.909	5.00
56	1.991	2.031	1.961	2.011	1.910	5.00
57	1.995	2.035	1.965	2.015	1.914	5.00
58	1.997	2.037	1.967	2.017	1.916	5.00
59	1.999	2.039	1.969	2.019	1.918	5.00
60	2.001	2.041	1.970	2.021	1.920	5.00
61	2.004	2.044	1.973	2.024	1.923	5.00
62	2.006	2.046	1.975	2.026	1.925	5.00
63	2.009	2.049	1.978	2.029	1.928	5.00
64	2.011	2.051	1.980	2.031	1.930	5.00
65	2.014	2.054	1.983	2.034	1.932	5.00
66	2.017	2.057	1.986	2.037	1.935	5.00
67	2.019	2.059	1.988	2.039	1.937	5.00
68	2.021	2.061	1.990	2.041	1.939	5.00
69	2.024	2.064	1.993	2.044	1.942	5.00
70	2.026	2.067	1.995	2.046	1.944	5.00
71	2.029	2.070	1.998	2.049	1.947	5.00
72	2.031	2.072	2.000	2.051	1.949	5.00
73	2.034	2.075	2.003	2.054	1.952	5.00
74	2.037	2.078	2.006	2.057	1.955	5.00
75	2.039	2.080	2.008	2.059	1.956	5.00
76	2.041	2.082	2.010	2.061	1.958	5.00
77	2.044	2.085	2.013	2.064	1.961	5.00
78	2.046	2.087	2.015	2.066	1.963	5.00
79	2.049	2.090	2.018	2.069	1.966	5.00
80	2.051	2.092	2.020	2.072	1.968	5.00
81	2.053	2.094	2.022	2.074	1.970	5.00
82	2.055	2.096	2.024	2.076	1.972	5.00
83	2.057	2.098	2.026	2.078	1.974	5.00
84	2.059	2.100	2.028	2.080	1.976	5.00
85	2.061	2.102	2.030	2.082	1.978	5.00
86	2.063	2.104	2.032	2.084	1.979	5.00
87	2.065	2.106	2.034	2.086	1.981	5.00
88	2.067	2.108	2.035	2.088	1.983	5.00
89	2.069	2.110	2.037	2.090	1.985	5.00
90	2.070	2.111	2.038	2.091	1.986	5.00
Summe	142.9	145.8	140.8	144.4	137.3	
Mittelwert	1.958	1.997	1.929	1.978	1.880	

Lebendgewichtsentwicklung Legehennen



Futterkonsum Legehennen



			
Leistungskennzahlen der Rasse: H&N Brown Nick / BN			
Aufzucht:			
Lebensfähigkeit	98.0 - 98.5	%	
Futtermittelverbrauch	6.410	kg	
Mittleres Körpergewicht mit 18 Wochen	1.478	kg	

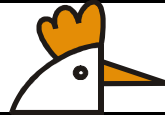
Legeperiode: (Daten bis zur 72. Alterswoche)			
<u>Eierproduktion</u>			
Legeleistung bei 50 %	21. - 22.	Alterswoche	
Spitzenleistung von > 90 %	25. - 49.	Alterswoche	
Anzahl Eier je Anfangshenne	315	Stück	
Durchschnittliche Legeleistung in %	87.1	%	

Legeleistung in der 72. Alterswoche	78.6	%	
Mittleres Eigewicht (über die ganze Legeperiode)	64.7	Gramm	
Eigewicht in der 32. Alterswoche	62.7	Gramm	
Eigewicht in der 72. Alterswoche	68.3	Gramm	

<u>Hennendaten</u>			
Lebensfähigkeit	94.0 - 96.0	%	
Mittleres Körpergewicht in der 21. Alterswoche	1.654	kg	
Mittleres Körpergewicht in der 72. Alterswoche	2.000	kg	

<u>Futterdaten</u>			
Futtermittelaufnahme pro Tag	115 - 121	Gramm	
Futtermittelverbrauch pro Ei	134 - 141	Gramm	

<u>Ei-Qualität</u>			
Schalenbruchfestigkeit	gut		
Haugh Units in der 32. Alterswoche	89	Einheiten	
Haugh Units in der 72. Alterswoche	79	Einheiten	



Leistungstabelle: H&N BrownNick				Aktualisiert: Juni 19 / MW	
Alterswoche	Eizahl pro AH "hoch" (kumuliert)	Legeleistung pro Woche "hoch"	Eigewicht pro Woche	Eigewicht ab Anfang (kumuliert)	Eimasse ab Anfang (kumuliert)
	Stück	%	Gramm	Gramm	kg
20	1	18.0	48.3	48.3	0.061
21	5	53.0	50.8	49.5	0.252
22	10	73.0	53.0	50.7	0.533
23	16	84.0	54.9	51.7	0.874
24	22	89.7	56.6	52.7	1.256
25	29	92.5	58.1	53.6	1.661
26	35	93.6	59.3	54.4	2.082
27	42	94.3	60.1	55.1	2.504
28	48	94.9	60.8	55.8	2.934
29	55	95.1	61.4	56.3	3.368
30	61	95.3	61.9	56.8	3.805
31	68	95.5	62.3	57.3	4.242
32	75	95.5	62.7	57.7	4.683
33	81	95.5	63.1	58.1	5.130
34	88	95.5	63.4	58.5	5.573
35	94	95.4	63.7	58.8	6.018
36	101	95.2	63.9	59.1	6.457
37	108	95.0	64.1	59.4	6.896
38	114	94.8	64.4	59.6	7.337
39	121	94.6	64.7	59.9	7.792
40	127	94.3	64.9	60.1	8.236
41	133	94.1	65.1	60.3	8.681
42	140	93.8	65.2	60.6	9.113
43	146	93.5	65.4	60.8	9.559
44	153	93.2	65.5	60.9	9.990
45	159	92.2	65.6	61.1	10.418
46	165	91.9	65.7	61.3	10.845
47	171	91.5	65.8	61.4	11.272
48	178	91.1	65.9	61.6	11.697
49	184	90.7	66.0	61.7	12.122
50	190	90.3	66.1	61.9	12.546
51	196	89.9	66.2	62.0	12.968
52	202	89.4	66.3	62.1	13.389
53	208	89.0	66.4	62.3	13.810
54	214	88.5	66.5	62.4	14.228
55	220	88.1	66.6	62.5	14.646
56	226	87.6	66.7	62.6	15.062
57	232	87.1	66.8	62.7	15.477
58	238	86.6	66.9	62.8	15.891
59	243	86.1	67.0	62.9	16.303
60	249	85.6	67.1	63.0	16.713
61	255	85.1	67.2	63.1	17.122
62	260	84.5	67.3	63.2	17.529
63	266	84.0	67.4	63.3	17.934
64	272	83.4	67.5	63.4	18.338
65	277	82.8	67.6	63.5	18.739
66	283	82.3	67.7	63.6	19.140
67	288	81.7	67.8	63.7	19.538
68	294	81.1	67.9	63.8	19.934
69	299	80.5	68.0	63.9	20.328
70	304	79.8	68.1	63.9	20.719
71	309	79.2	68.2	64.0	21.109
72	441	60.2	67.7	65.8	29.856

AW	Legeleist	Legeleist	Mortalität: 8.1 % Total
20	18	20.0	0.10
21	53	55.0	0.20
22	73	75.0	0.30
23	84	86.0	0.40
24	89.7	91.7	0.50
25	92.5	94.5	0.60
26	93.6	95.6	0.70
27	94.3	96.3	0.80
28	94.9	96.9	0.90
29	95.1	97.1	1.00
30	95.3	97.3	1.10
31	95.5	97.5	1.20
32	95.5	97.5	1.30
33	95.5	97.5	1.40
34	95.5	97.5	1.50
35	95.4	97.4	1.60
36	95.2	97.2	1.70
37	95	97.0	1.80
38	94.8	96.8	1.90
39	94.6	96.6	2.00
40	94.3	96.3	2.10
41	94.1	96.1	2.20
42	93.8	95.8	2.30
43	93.5	95.5	2.40
44	93.2	95.2	2.50
45	92.2	94.2	2.60
46	91.9	93.9	2.70
47	91.5	93.5	2.80
48	91.1	93.1	2.90
49	90.7	92.7	3.00
50	90.3	92.3	3.10
51	89.9	91.9	3.20
52	89.4	91.4	3.30
53	89	91.0	3.40