

PRODAVI SA

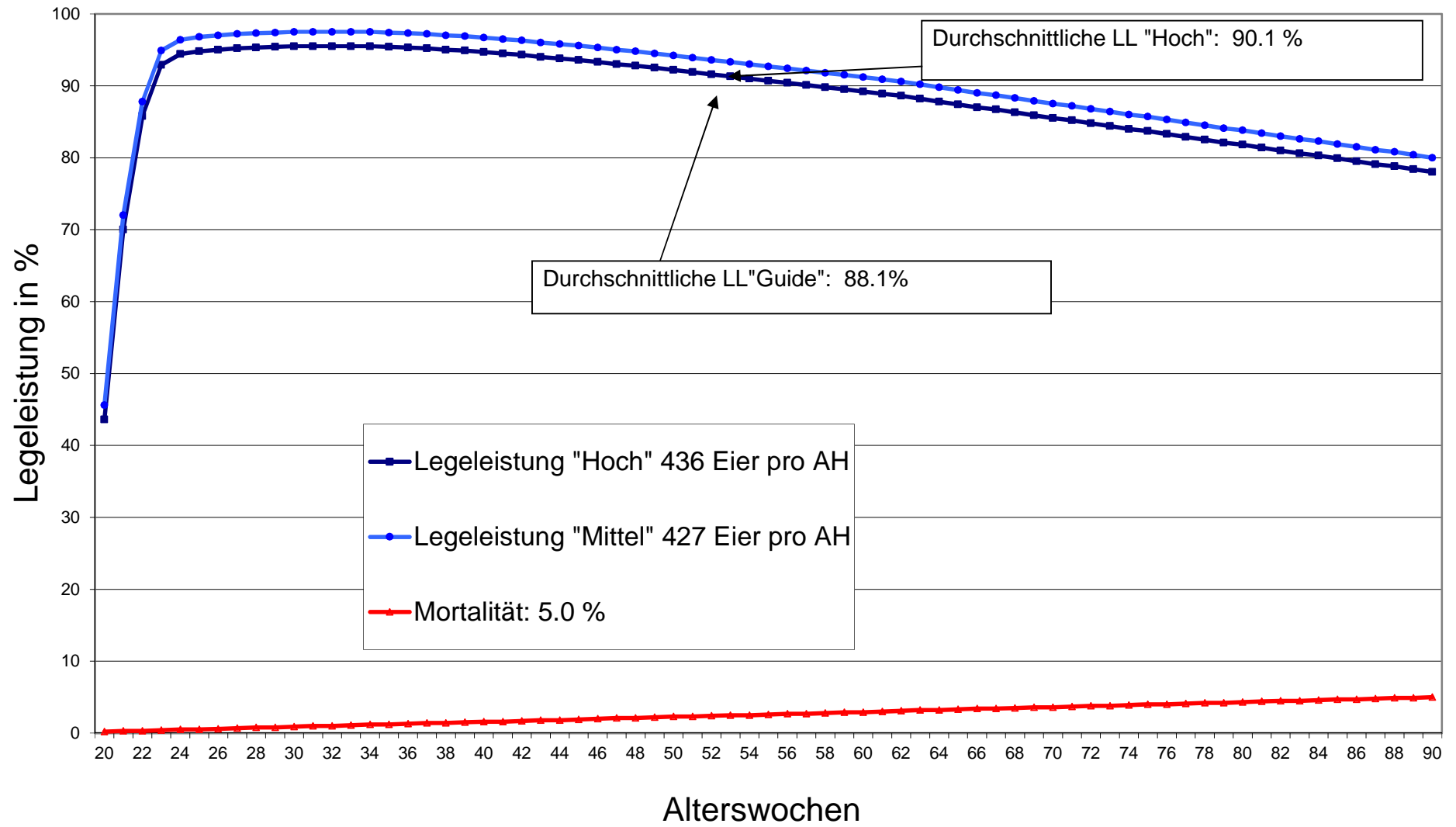


Prodavi SA, Sentmatte 1, CH-6247 Schötz
Tel. 041 925 85 60
Fax.041 925 85 75
www.prodavi.ch, info@prodavi.ch

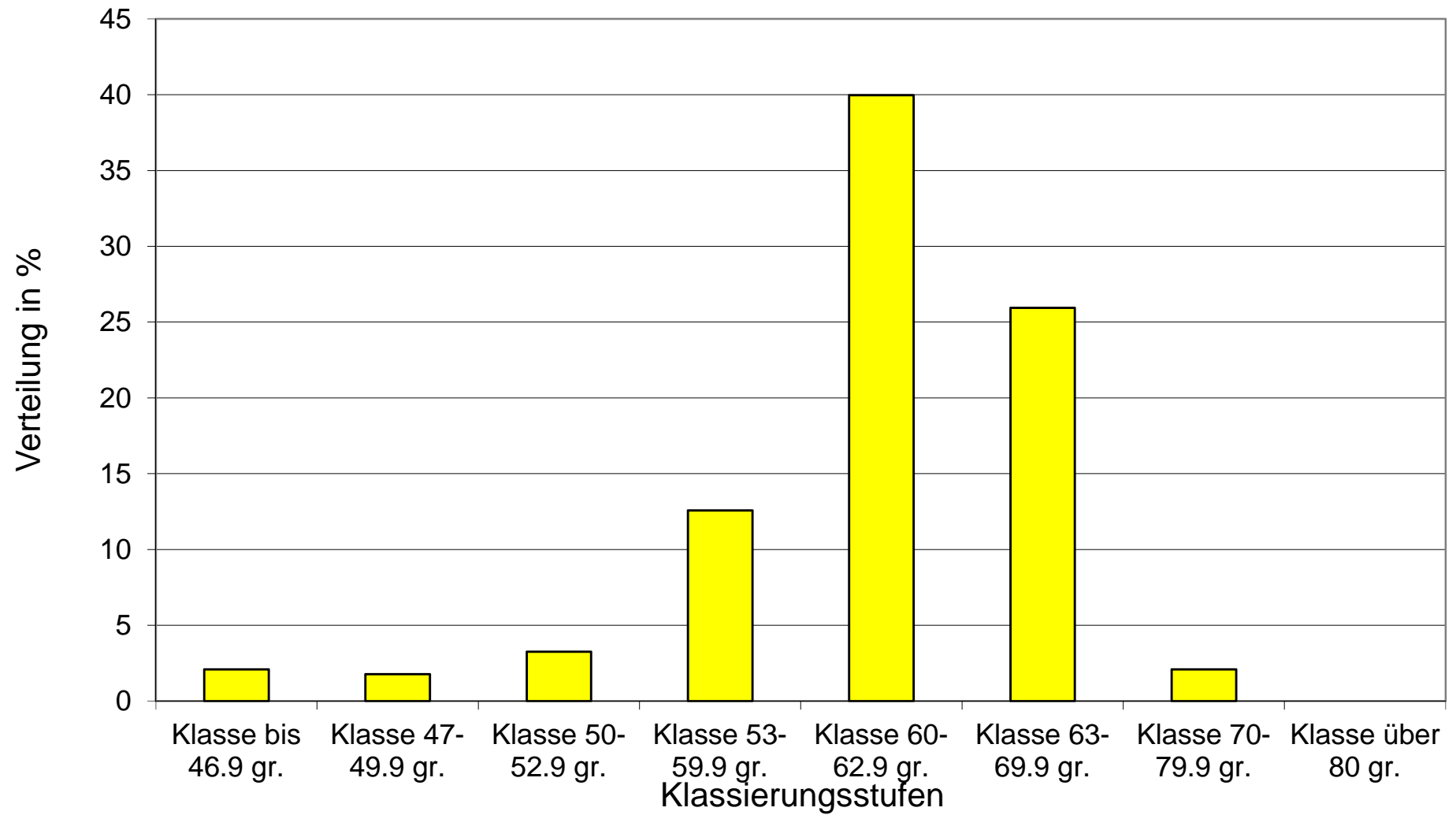
Leistungsdaten: Dekalb White				Aktualisiert: Juni 19 /MW			Management Guide Dekalb White		
	Ab 20. Alterswoche				1000	Stück		Eingabe für Graphik:	
	Bis 72. Alterswoche				950	Stück		Berechnung	
	LL Guide	LL Hoch	Mortalität	Mortalität	LL Guide	LL Hoch	Bestandes- korrektur	Futtertage: Mittel Anfang u. Ende berechnet!	Eizahl pro AH hoch, kumuliert
Korr.							Zelle "G2" abz. Spalte "E"		
AW	in %	in %	in %	in Stück	in Stück	in Stück	in Stück	FT	
20	43.6	45.6	0.20	2.0	3'049	3'189	998	6'993	3.05
21	70.0	72.0	0.30	3.0	4'888	5'027	997	6'983	7.94
22	85.8	87.8	0.30	3.0	5'988	6'128	997	6'979	13.92
23	92.9	94.9	0.40	4.0	6'480	6'620	996	6'976	20.40
24	94.4	96.4	0.50	5.0	6'578	6'718	995	6'969	26.98
25	94.8	96.8	0.50	5.0	6'603	6'742	995	6'965	33.59
26	95.0	97.0	0.60	6.0	6'613	6'753	994	6'962	40.20
27	95.2	97.2	0.70	7.0	6'621	6'760	993	6'955	46.82
28	95.3	97.3	0.80	8.0	6'621	6'760	992	6'948	53.44
29	95.4	97.4	0.80	8.0	6'625	6'763	992	6'944	60.07
30	95.5	97.5	0.90	9.0	6'628	6'767	991	6'941	66.69
31	95.5	97.5	1.00	10.0	6'621	6'760	990	6'934	73.32
32	95.5	97.5	1.00	10.0	6'618	6'757	990	6'930	79.93
33	95.5	97.5	1.10	11.0	6'615	6'753	989	6'927	86.55
34	95.5	97.5	1.20	12.0	6'608	6'747	988	6'920	93.16
35	95.4	97.4	1.20	12.0	6'598	6'736	988	6'916	99.75
36	95.3	97.3	1.30	13.0	6'588	6'726	987	6'913	106.34
37	95.2	97.2	1.40	14.0	6'574	6'712	986	6'906	112.92
38	95.0	97.0	1.40	14.0	6'557	6'695	986	6'902	119.47
39	94.9	96.9	1.50	15.0	6'547	6'685	985	6'899	126.02
40	94.7	96.7	1.60	16.0	6'526	6'664	984	6'892	132.55
41	94.5	96.5	1.60	16.0	6'509	6'647	984	6'888	139.05
42	94.3	96.3	1.70	17.0	6'492	6'630	983	6'885	145.55
43	94.0	96.0	1.80	18.0	6'465	6'602	982	6'878	152.01
44	93.8	95.8	1.80	18.0	6'448	6'585	982	6'874	158.46
45	93.6	95.6	1.90	19.0	6'431	6'568	981	6'871	164.89
46	93.3	95.3	2.00	20.0	6'404	6'541	980	6'864	171.29
47	93.0	95.0	2.10	21.0	6'377	6'514	979	6'857	177.67
48	92.8	94.8	2.10	21.0	6'360	6'497	979	6'853	184.03
49	92.5	94.5	2.20	22.0	6'336	6'473	978	6'850	190.37
50	92.2	94.2	2.30	23.0	6'309	6'446	977	6'843	196.67
51	91.9	93.9	2.30	23.0	6'285	6'422	977	6'839	202.96
52	91.6	93.6	2.40	24.0	6'261	6'398	976	6'836	209.22
53	91.3	93.3	2.50	25.0	6'234	6'371	975	6'829	215.46
54	91.0	93.0	2.50	25.0	6'211	6'347	975	6'825	221.67
55	90.7	92.7	2.60	26.0	6'187	6'324	974	6'822	227.85
56	90.4	92.4	2.70	27.0	6'160	6'297	973	6'815	234.01
57	90.1	92.1	2.70	27.0	6'137	6'273	973	6'811	240.15
58	89.8	91.8	2.80	28.0	6'113	6'249	972	6'808	246.26
59	89.5	91.5	2.90	29.0	6'086	6'222	971	6'801	252.35

Leistungsdaten: Dekalb White				Aktualisiert: Juni 19 /MW			Management Guide Dekalb White		
	Ab 20. Alterswoche			1000	Stück		Eingabe für Graphik:		
	Bis 72. Alterswoche			950	Stück		Berechnung		
	LL Guide	LL Hoch	Mortalität	Mortalität	LL Guide	LL Hoch	Bestandes- korrektur	Futtertage: Mittel Anfang u. Ende berechnet!	Eizahl pro AH hoch , kumuliert
Korr.							Zelle "G2" abz. Spalte "E"		
AW	in %	in %	in %	in Stück	in Stück	in Stück	in Stück	FT	
60	89.2	91.2	2.90	29.0	6'063	6'199	971	6'797	258.41
61	88.9	90.9	3.00	30.0	6'039	6'175	970	6'794	264.45
62	88.6	90.6	3.10	31.0	6'013	6'149	969	6'787	270.47
63	88.2	90.2	3.20	32.0	5'980	6'115	968	6'780	276.44
64	87.8	89.8	3.20	32.0	5'949	6'085	968	6'776	282.39
65	87.4	89.4	3.30	33.0	5'919	6'055	967	6'773	288.31
66	87.0	89.0	3.40	34.0	5'886	6'021	966	6'766	294.20
67	86.7	88.7	3.40	34.0	5'863	5'998	966	6'762	300.06
68	86.3	88.3	3.50	35.0	5'833	5'968	965	6'759	305.89
69	85.9	87.9	3.60	36.0	5'800	5'935	964	6'752	311.69
70	85.5	87.5	3.60	36.0	5'770	5'905	964	6'748	317.46
71	85.2	87.2	3.70	37.0	5'746	5'881	963	6'745	323.21
72	84.8	86.8	3.80	38.0	5'713	5'848	962	6'738	328.92
73	84.4	86.4	3.80	38.0	5'683	5'818	962	6'734	334.61
74	84.0	86.0	3.90	39.0	5'654	5'788	961	6'731	340.26
75	83.7	85.7	4.00	40.0	5'628	5'762	960	6'724	345.89
76	83.3	85.3	4.00	40.0	5'598	5'732	960	6'720	351.49
77	82.9	84.9	4.10	41.0	5'568	5'702	959	6'717	357.05
78	82.5	84.5	4.20	42.0	5'535	5'670	958	6'710	362.59
79	82.1	84.1	4.20	42.0	5'506	5'640	958	6'706	368.09
80	81.8	83.8	4.30	43.0	5'483	5'617	957	6'703	373.58
81	81.4	83.4	4.40	44.0	5'450	5'584	956	6'696	379.03
82	81.0	83.0	4.50	45.0	5'418	5'551	955	6'689	384.45
83	80.6	82.6	4.50	45.0	5'388	5'522	955	6'685	389.83
84	80.3	82.3	4.60	46.0	5'365	5'499	954	6'682	395.20
85	79.9	81.9	4.70	47.0	5'333	5'466	953	6'675	400.53
86	79.5	81.5	4.70	47.0	5'303	5'437	953	6'671	405.83
87	79.1	81.1	4.80	48.0	5'274	5'407	952	6'668	411.11
88	78.8	80.8	4.90	49.0	5'248	5'382	951	6'661	416.36
89	78.4	80.4	4.90	49.0	5'255	5'389	951	6'703	421.61
90	78.0	80.0	5.00	50.0	5'192	5'326	950	6'657	426.80
Total	88.1	90.1	5.0	50.0	426'804	436'490	950	484'288	
	Legeleistung pro Anfangsh. / Stk.				427	436			

Legeleistungskurve

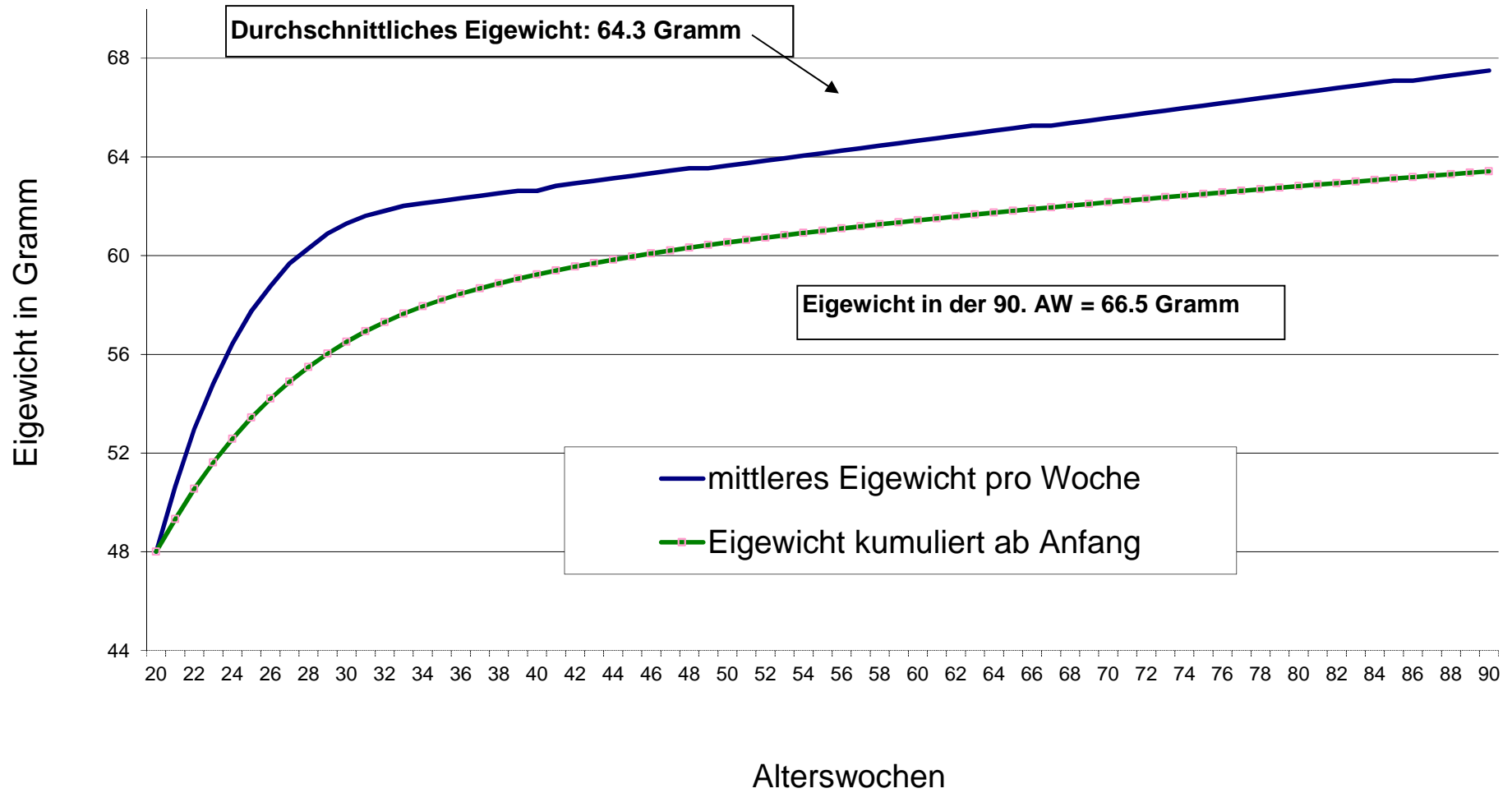


Anteil Eier pro Klassierung



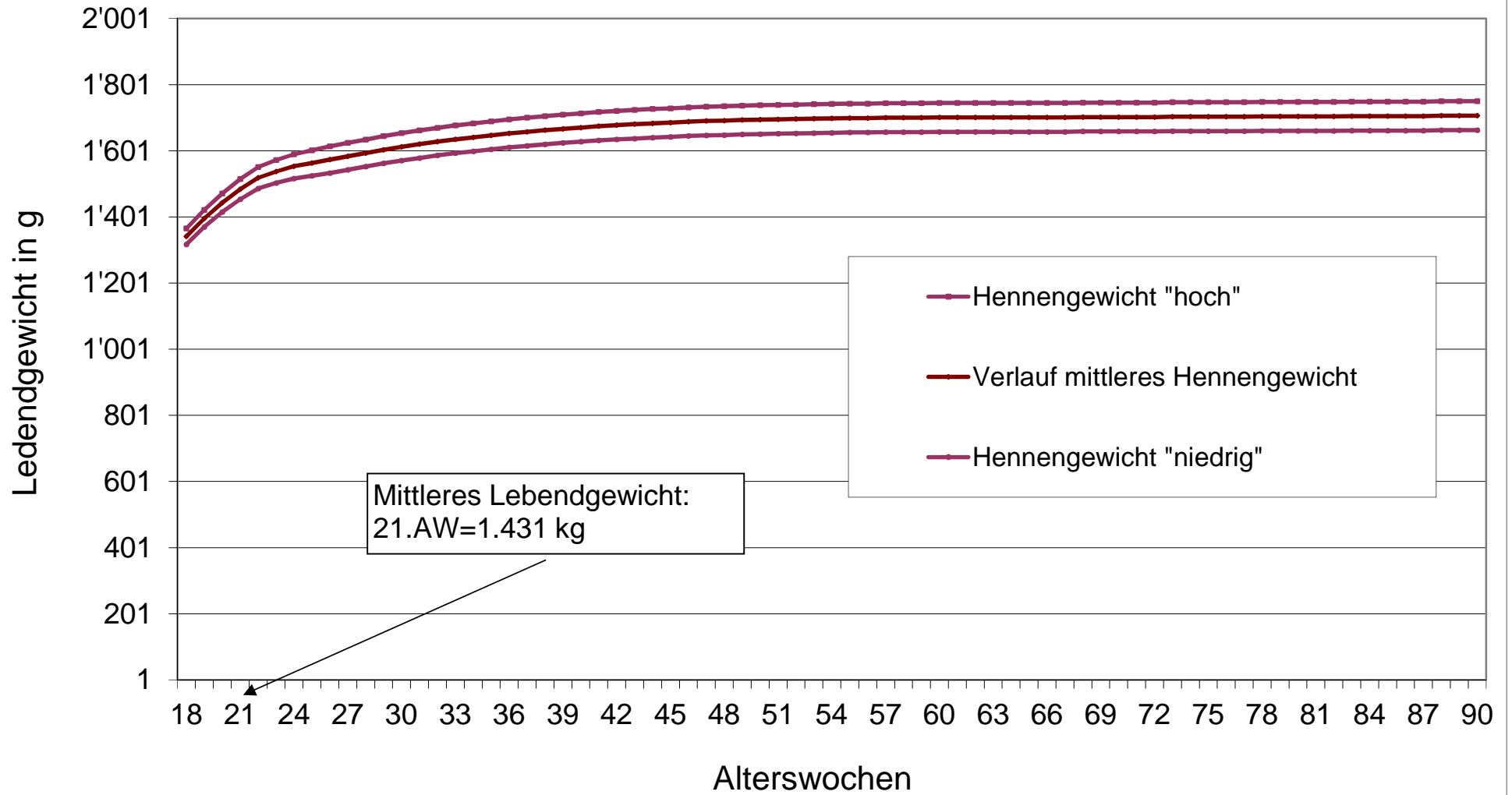
Leistungsdaten: Dekalb White				Aktualisiert: Juni 19/ MW								
Eingabe für Graphik: Dekalb White				Ei-Klassierung								
AW	Eigewicht Original Dekalb White	mittleres Eigewicht pro Woche	Eigewicht kumuliert ab Anfang	Klasse XXS bis 46.9 gr	Klasse XS 47 bis 49.9 gr	Klasse S 50 bis 52.9 gr	Klasse M 53 bis 59.9 gr	Klasse M 60 bis 62.9 gr	Klasse L 63 bis 69.9 gr	Klasse XL 70 bis 79.9 gr	Klasse XXL 80+gr	Kontrolle
Faktor				43.5	48.5	51.5	56.5	61.5	66.5	75.0	81.0	
	Gramm	1.015		in %	in %	in %	in %	in %	in %	in %	in %	Total
20	47.3	48.0	48.0	100.0	0.0	0.0	0.0	0.0	0.0	0.0	0.0	100.0
21	49.9	50.6	49.3	45.0	50.0	5.0	0.0	0.0	0.0	0.0	0.0	100.0
22	52.2	53.0	50.5	10.0	45.0	45.0	0.0	0.0	0.0	0.0	0.0	100.0
23	54.0	54.8	51.6	5.0	20.0	60.0	15.0	0.0	0.0	0.0	0.0	100.0
24	55.6	56.4	52.6	4.0	10.0	50.0	36.0	0.0	0.0	0.0	0.0	100.0
25	56.9	57.8	53.4	2.0	6.0	40.0	50.0	0.0	2.0	0.0	0.0	100.0
26	57.9	58.8	54.2	1.0	5.0	20.0	74.0	0.0	0.0	0.0	0.0	100.0
27	58.8	59.7	54.9	1.0	4.0	13.0	82.0	0.0	0.0	0.0	0.0	100.0
28	59.4	60.3	55.5	1.0	2.0	4.0	83.0	10.0	0.0	0.0	0.0	100.0
29	60.0	60.9	56.0	0.0	1.0	4.0	77.0	18.0	0.0	0.0	0.0	100.0
30	60.4	61.3	56.5	0.0	0.0	4.0	66.0	30.0	0.0	0.0	0.0	100.0
31	60.7	61.6	56.9	0.0	0.0	3.0	60.0	33.0	4.0	0.0	0.0	100.0
32	60.9	61.8	57.3	0.0	0.0	3.0	53.0	40.0	4.0	0.0	0.0	100.0
33	61.1	62.0	57.6	0.0	0.0	2.0	45.0	47.0	6.0	0.0	0.0	100.0
34	61.2	62.1	57.9	0.0	0.0	2.0	39.0	51.0	8.0	0.0	0.0	100.0
35	61.3	62.2	58.2	0.0	0.0	1.0	35.0	55.0	9.0	0.0	0.0	100.0
36	61.4	62.3	58.5	0.0	0.0	1.0	30.0	58.0	11.0	0.0	0.0	100.0
37	61.5	62.4	58.7	0.0	0.0	1.0	25.0	63.0	11.0	0.0	0.0	100.0
38	61.6	62.5	58.9	0.0	0.0	1.0	23.0	65.0	11.0	0.0	0.0	100.0
39	61.7	62.6	59.1	0.0	0.0	1.0	22.0	65.0	12.0	0.0	0.0	100.0
40	61.7	62.6	59.2	0.0	0.0	1.0	18.0	68.0	13.0	0.0	0.0	100.0
41	61.9	62.8	59.4	0.0	0.0	1.0	16.0	70.0	13.0	0.0	0.0	100.0
42	62.0	62.9	59.5	0.0	0.0	1.0	14.0	70.0	15.0	0.0	0.0	100.0
43	62.1	63.0	59.7	0.0	0.0	0.0	14.0	70.0	16.0	0.0	0.0	100.0
44	62.2	63.1	59.8	0.0	0.0	0.0	12.0	72.0	16.0	0.0	0.0	100.0
45	62.3	63.2	60.0	0.0	0.0	0.0	10.0	72.0	18.0	0.0	0.0	100.0
46	62.4	63.3	60.1	0.0	0.0	0.0	9.0	72.0	19.0	0.0	0.0	100.0
47	62.5	63.4	60.2	0.0	0.0	0.0	8.0	72.0	20.0	0.0	0.0	100.0
48	62.6	63.5	60.3	0.0	0.0	0.0	8.0	70.0	22.0	0.0	0.0	100.0
49	62.6	63.5	60.4	0.0	0.0	0.0	7.0	67.0	25.0	1.0	0.0	100.0
50	62.7	63.6	60.5	0.0	0.0	0.0	7.0	65.0	27.0	1.0	0.0	100.0
51	62.8	63.7	60.6	0.0	0.0	0.0	6.0	66.0	26.0	2.0	0.0	100.0
52	62.9	63.8	60.7	0.0	0.0	0.0	6.0	63.0	29.0	2.0	0.0	100.0
53	63.0	63.9	60.8	0.0	0.0	0.0	5.0	62.0	31.0	2.0	0.0	100.0
54	63.1	64.0	60.9	0.0	0.0	0.0	5.0	63.0	30.0	2.0	0.0	100.0
55	63.2	64.1	61.0	0.0	0.0	0.0	4.0	62.0	31.0	3.0	0.0	100.0
56	63.3	64.2	61.1	0.0	0.0	0.0	4.0	61.0	32.0	3.0	0.0	100.0
57	63.4	64.4	61.2	0.0	0.0	0.0	2.0	60.0	35.0	3.0	0.0	100.0
58	63.5	64.5	61.3	0.0	0.0	0.0	2.0	58.0	37.0	3.0	0.0	100.0
59	63.6	64.6	61.3	0.0	0.0	0.0	2.0	56.0	39.0	3.0	0.0	100.0
60	63.7	64.7	61.4	0.0	0.0	0.0	2.0	55.0	40.0	3.0	0.0	100.0
61	63.8	64.8	61.5	0.0	0.0	0.0	2.0	54.0	40.0	4.0	0.0	100.0
62	63.9	64.9	61.6	0.0	0.0	0.0	2.0	52.0	42.0	4.0	0.0	100.0
63	64.0	65.0	61.7	0.0	0.0	0.0	2.0	52.0	42.0	4.0	0.0	100.0
64	64.1	65.1	61.7	0.0	0.0	0.0	2.0	50.0	44.0	4.0	0.0	100.0
65	64.2	65.2	61.8	0.0	0.0	0.0	2.0	49.0	45.0	4.0	0.0	100.0
66	64.3	65.3	61.9	0.0	0.0	0.0	2.0	48.0	46.0	4.0	0.0	100.0
67	64.3	65.3	62.0	0.0	0.0	0.0	2.0	46.0	48.0	4.0	0.0	100.0
68	64.4	65.4	62.0	0.0	0.0	0.0	2.0	45.0	49.0	4.0	0.0	100.0
69	64.5	65.5	62.1	0.0	0.0	0.0	2.0	45.0	49.0	4.0	0.0	100.0
70	64.6	65.6	62.2	0.0	0.0	0.0	2.0	44.0	49.0	5.0	0.0	100.0
71	64.7	65.7	62.2	0.0	0.0	0.0	2.0	43.0	50.0	5.0	0.0	100.0
72	64.8	65.8	62.3	0.0	0.0	0.0	2.0	43.0	50.0	5.0	0.0	100.0
73	64.9	65.9	62.4	0.0	0.0	0.0	1.0	43.0	51.0	5.0	0.0	100.0
74	65.0	66.0	62.4	0.0	0.0	0.0	1.0	42.0	52.0	5.0	0.0	100.0
75	65.1	66.1	62.5	0.0	0.0	0.0	1.0	42.0	52.0	5.0	0.0	100.0
76	65.2	66.2	62.6	0.0	0.0	0.0	1.0	42.0	52.0	5.0	0.0	100.0
77	65.3	66.3	62.6	0.0	0.0	0.0	1.0	42.0	52.0	5.0	0.0	100.0
78	65.4	66.4	62.7	0.0	0.0	0.0	1.0	42.0	52.0	5.0	0.0	100.0
79	65.5	66.5	62.7	0.0	0.0	0.0	1.0	42.0	52.0	5.0	0.0	100.0
80	65.6	66.6	62.8	0.0	0.0	0.0	1.0	42.0	52.0	5.0	0.0	100.0
81	65.7	66.7	62.9	0.0	0.0	0.0	1.0	42.0	52.0	5.0	0.0	100.0
82	65.8	66.8	62.9	0.0	0.0	0.0	1.0	42.0	52.0	5.0	0.0	100.0
83	65.9	66.9	63.0	0.0	0.0	0.0	1.0	42.0	52.0	5.0	0.0	100.0
84	66.0	67.0	63.1	0.0	0.0	0.0	1.0	42.0	52.0	5.0	0.0	100.0
85	66.1	67.1	63.1	0.0	0.0	0.0	1.0	42.0	52.0	5.0	0.0	100.0
86	66.1	67.1	63.2	0.0	0.0	0.0	1.0	42.0	52.0	5.0	0.0	100.0
87	66.2	67.2	63.2	0.0	0.0	0.0	1.0	42.0	52.0	5.0	0.0	100.0
88	66.3	67.3	63.3	0.0	0.0	0.0	1.0	42.0	52.0	5.0	0.0	100.0
89	66.4	67.4	63.4	0.0	0.0	0.0	1.0	42.0	52.0	5.0	0.0	100.0
90	66.5	67.5	63.4	0.0	0.0	0.0	1.0	42.0	52.0	5.0	0.0	100.0
Summe	4435.9	4502.4		169.0	143.0	263.0	1018.0	3237.0	2101.0	169.0	0.0	
Anzahl	70	70		81	81	81	81	81	81	81	81	
	63.4	64.3		2.1	1.8	3.2	12.6	40.0	25.9	2.1	0.0	87.7
Korrektur auf: > 73 Gramm				Klasse bis 46.9 gr.	Klasse 47-49.9 gr.	Klasse 50-52.9 gr.	Klasse 53-59.9 gr.	Klasse 60-62.9 gr.	Klasse 63-69.9 gr.	Klasse 70-79.9 gr.	Klasse über 80 gr.	
Korrektur Gewichtung				2.1	1.8	3.2	12.6	40.0	25.9	2.1	0.0	87.7

Eigewichtsentwicklung



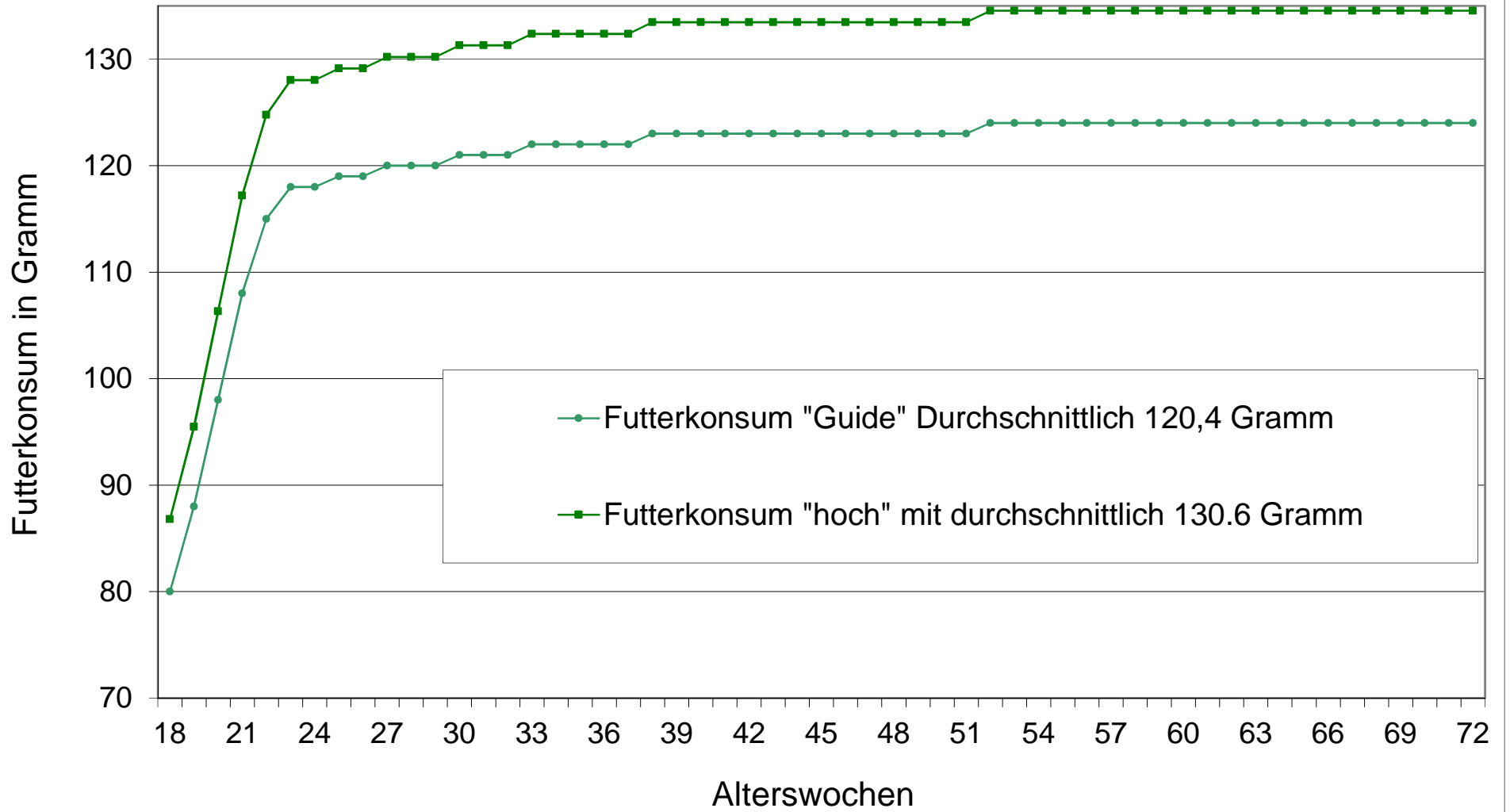
Leistungsdaten: Dekalb White			Aktualisiert: Juni 19 /MW			
Erfassung des Lebendgewichtes						
Eingabe für Graphik		Berechnung Mittel		Mittel B +C	Korrektur Niedrig	Korrektur
AW	Guide Dekalb White Original	1.03	Verlauf mittleres Hennengewicht	Hennengewicht "hoch"	Hennengewicht "niedrig"	Faktor in %
18	1'346	1'386	1'342	1'366	1'318	3.50
19	1'401	1'443	1'396	1'422	1'371	3.60
20	1'450	1'494	1'444	1'472	1'416	3.80
21	1'493	1'538	1'485	1'515	1'455	4.00
22	1'529	1'575	1'519	1'552	1'487	4.20
23	1'550	1'597	1'539	1'573	1'504	4.40
24	1'567	1'614	1'554	1'591	1'517	4.60
25	1'579	1'626	1'564	1'603	1'526	4.80
26	1'591	1'639	1'574	1'615	1'534	5.00
27	1'601	1'649	1'584	1'625	1'544	5.00
28	1'611	1'659	1'594	1'635	1'553	5.00
29	1'621	1'670	1'604	1'645	1'563	5.00
30	1'630	1'679	1'613	1'654	1'572	5.00
31	1'638	1'687	1'621	1'663	1'579	5.00
32	1'646	1'695	1'629	1'671	1'587	5.00
33	1'653	1'703	1'636	1'678	1'594	5.00
34	1'659	1'709	1'642	1'684	1'600	5.00
35	1'665	1'715	1'648	1'690	1'605	5.00
36	1'671	1'721	1'654	1'696	1'611	5.00
37	1'676	1'726	1'659	1'701	1'616	5.00
38	1'681	1'731	1'664	1'706	1'621	5.00
39	1'685	1'736	1'668	1'710	1'625	5.00
40	1'689	1'740	1'671	1'714	1'629	5.00
41	1'693	1'744	1'675	1'718	1'632	5.00
42	1'696	1'747	1'678	1'721	1'635	5.00
43	1'699	1'750	1'681	1'724	1'638	5.00
44	1'702	1'753	1'684	1'728	1'641	5.00
45	1'704	1'755	1'686	1'730	1'643	5.00
46	1'707	1'758	1'689	1'733	1'646	5.00
47	1'709	1'760	1'691	1'735	1'648	5.00
48	1'710	1'761	1'692	1'736	1'649	5.00
49	1'712	1'763	1'694	1'738	1'651	5.00
50	1'713	1'764	1'695	1'739	1'652	5.00
51	1'714	1'765	1'696	1'740	1'653	5.00
52	1'715	1'766	1'697	1'741	1'654	5.00
53	1'716	1'767	1'698	1'742	1'655	5.00
54	1'717	1'769	1'699	1'743	1'656	5.00
55	1'718	1'770	1'700	1'744	1'657	5.00
56	1'718	1'770	1'700	1'744	1'657	5.00
57	1'719	1'771	1'701	1'745	1'658	5.00
58	1'719	1'771	1'701	1'745	1'658	5.00
59	1'719	1'771	1'701	1'745	1'658	5.00
60	1'720	1'772	1'702	1'746	1'659	5.00
61	1'720	1'772	1'702	1'746	1'659	5.00
62	1'720	1'772	1'702	1'746	1'659	5.00
63	1'720	1'772	1'702	1'746	1'659	5.00
64	1'720	1'772	1'702	1'746	1'659	5.00
65	1'720	1'772	1'702	1'746	1'659	5.00
66	1'720	1'772	1'702	1'746	1'659	5.00
67	1'720	1'772	1'702	1'746	1'659	5.00
68	1'721	1'773	1'703	1'747	1'659	5.00
69	1'721	1'773	1'703	1'747	1'659	5.00
70	1'721	1'773	1'703	1'747	1'659	5.00
71	1'721	1'773	1'703	1'747	1'659	5.00
72	1'721	1'773	1'703	1'747	1'659	5.00
73	1'722	1'774	1'704	1'748	1'660	5.00
74	1'722	1'774	1'704	1'748	1'660	5.00
75	1'722	1'774	1'704	1'748	1'660	5.00
76	1'722	1'774	1'704	1'748	1'660	5.00
77	1'722	1'774	1'704	1'748	1'660	5.00
78	1'723	1'775	1'705	1'749	1'661	5.00
79	1'723	1'775	1'705	1'749	1'661	5.00
80	1'723	1'775	1'705	1'749	1'661	5.00
81	1'723	1'775	1'705	1'749	1'661	5.00
82	1'723	1'775	1'705	1'749	1'661	5.00
83	1'724	1'776	1'706	1'750	1'662	5.00
84	1'724	1'776	1'706	1'750	1'662	5.00
85	1'724	1'776	1'706	1'750	1'662	5.00
86	1'724	1'776	1'706	1'750	1'662	5.00
87	1'724	1'776	1'706	1'750	1'662	5.00
88	1'725	1'777	1'707	1'751	1'663	5.00
89	1'725	1'777	1'707	1'751	1'663	5.00
90	1'725	1'777	1'707	1'751	1'663	5.00
Summe	122517	126193	121298	124355	118242	
Mittelwert	1725.592	1777.359	1708.425	1751.475	1665.375	

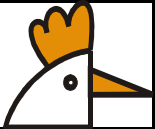
Lebendgewichtsentwicklung Legehennen



Leistungsdaten: Dekalb White		Aktualisiert: Juni 19 MW		
Erfassung des Futterkonsums				
AW	Futterkonsum "Guide" Durchschnittlich 120,4 Gramm	durchschnittlich 130.6 Gramm	effektiver Futterkonsum	Kommentar
Korr.in %	Eingabe für Graphik	1.085		
18	80.0	86.8		
19	88.0	95.5		
20	98.0	106.3		
21	108.0	117.2		
22	115.0	124.8		
23	118.0	128.0		
24	118.0	128.0		
25	119.0	129.1		
26	119.0	129.1		
27	120.0	130.2		
28	120.0	130.2		
29	120.0	130.2		
30	121.0	131.3		
31	121.0	131.3		
32	121.0	131.3		
33	122.0	132.4		
34	122.0	132.4		
35	122.0	132.4		
36	122.0	132.4		
37	122.0	132.4		
38	123.0	133.5		
39	123.0	133.5		
40	123.0	133.5		
41	123.0	133.5		
42	123.0	133.5		
43	123.0	133.5		
44	123.0	133.5		
45	123.0	133.5		
46	123.0	133.5		
47	123.0	133.5		
48	123.0	133.5		
49	123.0	133.5		
50	123.0	133.5		
51	123.0	133.5		
52	124.0	134.5		
53	124.0	134.5		
54	124.0	134.5		
55	124.0	134.5		
56	124.0	134.5		
57	124.0	134.5		
58	124.0	134.5		
59	124.0	134.5		
60	124.0	134.5		
61	124.0	134.5		
62	124.0	134.5		
63	124.0	134.5		
64	124.0	134.5		
65	124.0	134.5		
66	124.0	134.5		
67	124.0	134.5		
68	124.0	134.5		
69	124.0	134.5		
70	124.0	134.5		
71	124.0	134.5		
72	124.0	134.5		
Summe	6622.0	7184.9		
Mittelwert	120.4	130.6		

Futterkonsum Legehennen



			
Leistungskennzahlen von H&N Nick Chick			
Aufzucht:			
Lebensfähigkeit	97.5 - 98.5	%	
Futtermittelverbrauch	6.000	kg	
Mittleres Körpergewicht mit 18 Wochen	1.346	kg	

Legeperiode: (Daten bis zur 72. Alterswoche)

Eierproduktion		
Legeleistung bei 50 %	21	Alterswoche
Spitzenleistung von > 90 %	25. - 57.	Alterswoche
Anzahl Eier je Anfangshenne	325.3	Stück
Durchschnittliche Legeleistung in %	90.5	%

Legeleistung in der 72. Alterswoche	84.8	%
Mittleres Eigewicht (über die ganze Legeperiode)	61.1	Gramm
Eigewicht in der 32. Alterswoche	61.8	Gramm
Eigewicht in der 72. Alterswoche	65.8	Gramm

Hennendaten		
Lebensfähigkeit	94.5 - 96.0	%
Mittleres Körpergewicht in der 21. Alterswoche	1485	Gramm
Mittleres Körpergewicht in der 72. Alterswoche	1703	Gramm

Futterdaten		
Futteraufnahme pro Tag	117 - 127	Gramm
Futteraufwand pro Ei	134 - 145	Gramm

Ei-Qualität		
Schalenbruchfestigkeit	gut	
Haugh Units in der 32. Alterswoche	90	Einheiten
Haugh Units in der 72. Alterswoche	75	Einheiten



Leistungsvorgaben: Dekalb White

Aktualisiert: Nov 18/MW

Alterswoche	Eizahl pro AH "hoch" (kumuliert)	Legeleistung pro Woche "hoch"	Eigewicht pro Woche	Eigewicht ab Anfang (kumuliert)	Eimasse ab Anfang (kumuliert)
	Stück	%	Gramm	Gramm	kg
20	3	43.6	48.0	48.0	0.146
21	8	70.0	50.6	49.3	0.402
22	14	85.8	53.0	50.5	0.738
23	20	92.9	54.8	51.6	1.118
24	27	94.4	56.4	52.6	1.523
25	34	94.8	57.8	53.4	1.940
26	40	95.0	58.8	54.2	2.362
27	47	95.2	59.7	54.9	2.794
28	53	95.3	60.3	55.5	3.222
29	60	95.4	60.9	56.0	3.658
30	67	95.5	61.3	56.5	4.089
31	73	95.5	61.6	56.9	4.517
32	80	95.5	61.8	57.3	4.941
33	87	95.5	62.0	57.6	5.367
34	93	95.5	62.1	57.9	5.787
35	100	95.4	62.2	58.2	6.207
36	106	95.3	62.3	58.5	6.627
37	113	95.2	62.4	58.7	7.048
38	119	95.0	62.5	58.9	7.470
39	126	94.9	62.6	59.1	7.892
40	133	94.7	62.6	59.2	8.301
41	139	94.5	62.8	59.4	8.737
42	146	94.3	62.9	59.5	9.159
43	152	94.0	63.0	59.7	9.582
44	158	93.8	63.1	59.8	10.004
45	165	93.6	63.2	60.0	10.427
46	171	93.3	63.3	60.1	10.849
47	178	93.0	63.4	60.2	11.271
48	184	92.8	63.5	60.3	11.693
49	190	92.5	63.5	60.4	12.096
50	197	92.2	63.6	60.5	12.516
51	203	91.9	63.7	60.6	12.937
52	209	91.6	63.8	60.7	13.357
53	215	91.3	63.9	60.8	13.777
54	222	91.0	64.0	60.9	14.197
55	228	90.7	64.1	61.0	14.616
56	234	90.4	64.2	61.1	15.035
57	240	90.1	64.4	61.2	15.454
58	246	89.8	64.5	61.3	15.872
59	252	89.5	64.6	61.3	16.290
60	258	89.2	64.7	61.4	16.708
61	264	88.9	64.8	61.5	17.125
62	270	88.6	64.9	61.6	17.542
63	276	88.2	65.0	61.7	17.958
64	282	87.8	65.1	61.7	18.373
65	288	87.4	65.2	61.8	18.787
66	294	87.0	65.3	61.9	19.201
67	300	86.7	65.3	62.0	19.583
68	306	86.3	65.4	62.0	19.995
69	312	85.9	65.5	62.1	20.406
70	317	85.5	65.6	62.2	20.816
71	323	85.2	65.7	62.2	21.225
72	329	84.8	65.8	62.3	21.634