

PRODAVI SA

**NICK
CHICK**

White Egg Layers



The key to your profit!



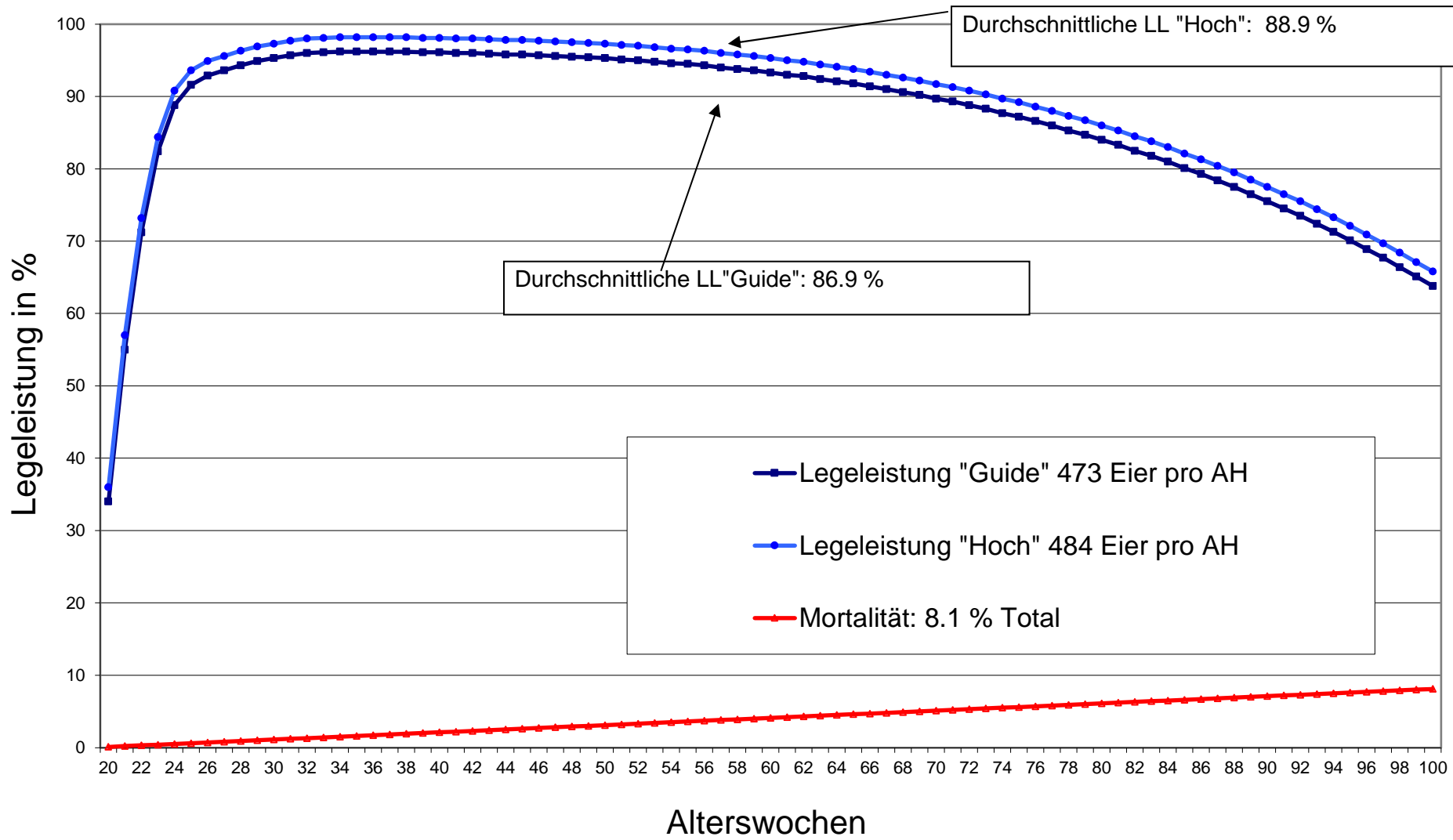
Prodavi SA, Sentmatte 1, CH-6247 Schötz
Tel. 041 925 85 60
Fax.041 925 85 75
www.prodavi.ch, info@prodavi.ch

Leistungsdaten: H&N Nich Chick		Aktualisiert: Juni 19/ MW		
Erfassung des Futterkonsums				
AW	Futterkonsum "tief" mit durchschnittlich 117 Gramm	Futterkonsum "hoch" mit durchschnittlich 127 Gramm	effektiver Futterkonsum	Kommentar
Korr.in %	Eingabe für Graphik	1.085		
18	78.0	84.6		
19	88.0	95.5		
20	90.0	97.7		
21	95.0	103.1		
22	101.0	109.6		
23	106.0	115.0		
24	111.0	120.4		
25	116.0	125.9		
26	118.0	128.0		
27	118.0	128.0		
28	118.0	128.0		
29	118.0	128.0		
30	118.0	128.0		
31	118.0	128.0		
32	118.0	128.0		
33	118.0	128.0		
34	118.0	128.0		
35	118.0	128.0		
36	118.0	128.0		
37	118.0	128.0		
38	118.0	128.0		
39	118.0	128.0		
40	118.0	128.0		
41	118.0	128.0		
42	120.0	130.2		
43	120.0	130.2		
44	120.0	130.2		
45	120.0	130.2		
46	120.0	130.2		
47	120.0	130.2		
48	120.0	130.2		
49	120.0	130.2		
50	120.0	130.2		
51	120.0	130.2		
52	120.0	130.2		
53	120.0	130.2		
54	120.0	130.2		
55	120.0	130.2		
56	122.0	132.4		
57	122.0	132.4		
58	122.0	132.4		
59	122.0	132.4		
60	122.0	132.4		
61	122.0	132.4		
62	122.0	132.4		
63	122.0	132.4		
64	122.0	132.4		
65	122.0	132.4		
66	122.0	132.4		
67	122.0	132.4		
68	122.0	132.4		
69	122.0	132.4		
70	122.0	132.4		
71	122.0	132.4		
72	122.0	132.4		
Summe	6427.0	6973.3		
Mittelwert	116.9	126.8		

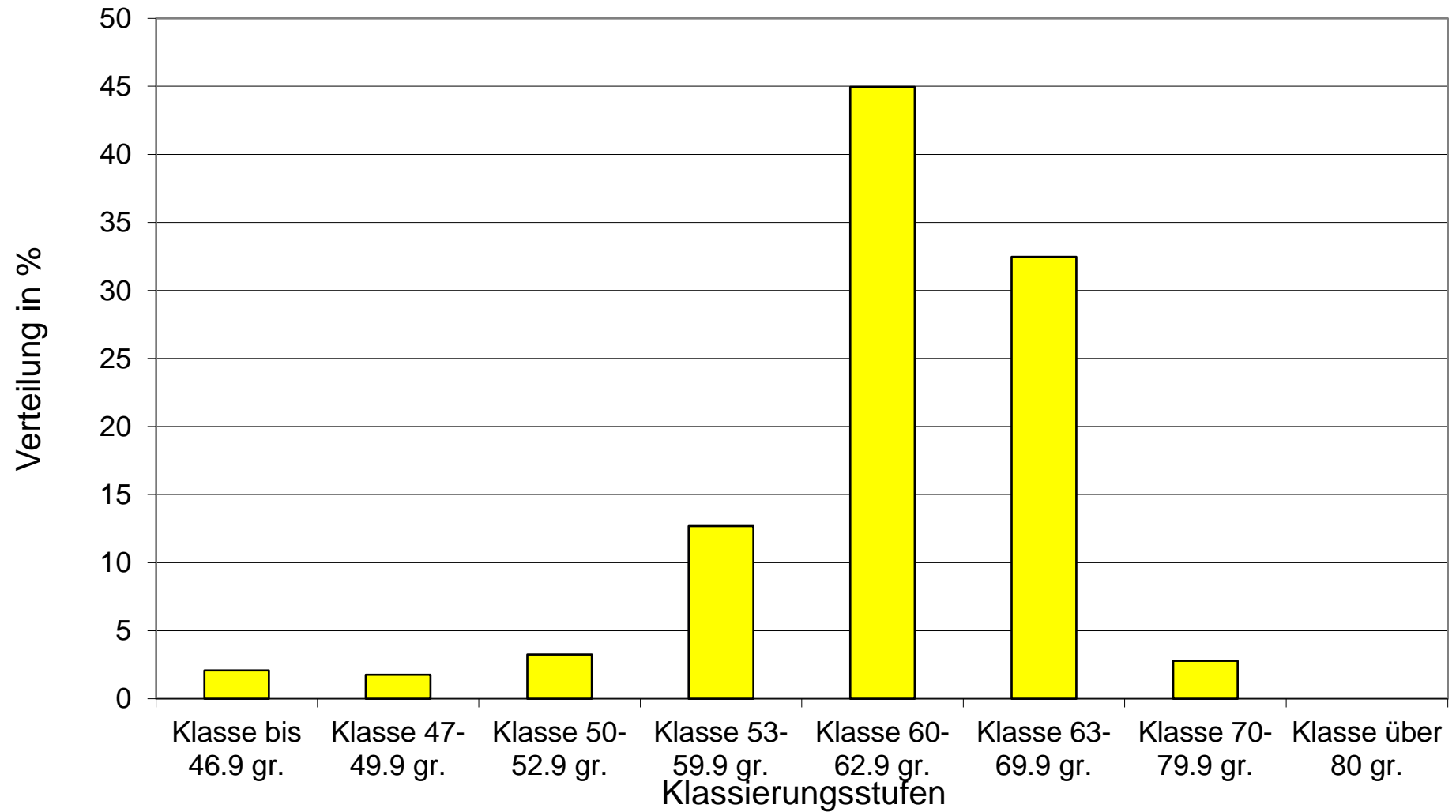
Leistungsdaten: H&N Nick Chick HN				Aktualisiert: Juni 19 /MW			Management Guide"Nick Chick" 2019			
	Ab 20. Alterswoche				1000	Stück		Eingabe für Graphik:		
	Bis 72. Alterswoche				919	Stück		Berechnung		
	LL Guide	LL Hoch	Mortalität	Mortalität	LL Guide	LL Hoch	Bestandeskorrektur	Futtertage: Mittel Anfang u. Ende berechnet!	Eizahl pro AH hoch, kumuliert	
Korr.		2.0					Zelle"G2"abz. Spalte "E"			
AW	in %	in %	in %	in Stück	in Stück	in Stück	in Stück	FT		
20	34.0	36.0	0.10	1.0	2'379	2'519	999	6'997	2.38	
21	55.0	57.0	0.20	2.0	3'844	3'984	998	6'990	6.22	
22	71.2	73.2	0.30	3.0	4'972	5'111	997	6'983	11.19	
23	82.4	84.4	0.40	4.0	5'748	5'887	996	6'976	16.94	
24	88.8	90.8	0.50	5.0	6'188	6'327	995	6'969	23.13	
25	91.6	93.6	0.60	6.0	6'377	6'516	994	6'962	29.51	
26	92.9	94.9	0.70	7.0	6'461	6'600	993	6'955	35.97	
27	93.6	95.6	0.80	8.0	6'503	6'642	992	6'948	42.47	
28	94.3	96.3	0.90	9.0	6'545	6'684	991	6'941	49.02	
29	94.9	96.9	1.00	10.0	6'580	6'719	990	6'934	55.60	
30	95.3	97.3	1.10	11.0	6'601	6'739	989	6'927	62.20	
31	95.7	97.7	1.20	12.0	6'622	6'760	988	6'920	68.82	
32	96.0	98.0	1.30	13.0	6'636	6'774	987	6'913	75.45	
33	96.1	98.1	1.40	14.0	6'636	6'774	986	6'906	82.09	
34	96.2	98.2	1.50	15.0	6'636	6'774	985	6'899	88.73	
35	96.2	98.2	1.60	16.0	6'630	6'767	984	6'892	95.36	
36	96.2	98.2	1.70	17.0	6'623	6'761	983	6'885	101.98	
37	96.2	98.2	1.80	18.0	6'616	6'754	982	6'878	108.60	
38	96.2	98.2	1.90	19.0	6'609	6'747	981	6'871	115.21	
39	96.1	98.1	2.00	20.0	6'596	6'733	980	6'864	121.80	
40	96.1	98.1	2.10	21.0	6'589	6'726	979	6'857	128.39	
41	96.0	98.0	2.20	22.0	6'576	6'713	978	6'850	134.97	
42	96.0	98.0	2.30	23.0	6'569	6'706	977	6'843	141.53	
43	95.9	97.9	2.40	24.0	6'555	6'692	976	6'836	148.09	
44	95.8	97.8	2.50	25.0	6'542	6'678	975	6'829	154.63	
45	95.8	97.8	2.60	26.0	6'535	6'671	974	6'822	161.17	
46	95.7	97.7	2.70	27.0	6'521	6'658	973	6'815	167.69	
47	95.6	97.6	2.80	28.0	6'508	6'644	972	6'808	174.20	
48	95.5	97.5	2.90	29.0	6'494	6'630	971	6'801	180.69	
49	95.4	97.4	3.00	30.0	6'481	6'617	970	6'794	187.17	
50	95.3	97.3	3.10	31.0	6'468	6'603	969	6'787	193.64	
51	95.1	97.1	3.20	32.0	6'447	6'583	968	6'780	200.09	
52	95.0	97.0	3.30	33.0	6'434	6'569	967	6'773	206.52	
53	94.8	96.8	3.40	34.0	6'414	6'549	966	6'766	212.93	
54	94.6	96.6	3.50	35.0	6'394	6'529	965	6'759	219.33	
55	94.5	96.5	3.60	36.0	6'380	6'515	964	6'752	225.71	
56	94.3	96.3	3.70	37.0	6'360	6'495	963	6'745	232.07	
57	94.0	96.0	3.80	38.0	6'333	6'468	962	6'738	238.40	
58	93.8	95.8	3.90	39.0	6'313	6'448	961	6'731	244.71	
59	93.6	95.6	4.00	40.0	6'293	6'428	960	6'724	251.01	

Leistungsdaten: H&N Nick Chick HN				Aktualisiert: Juni 19 /MW		Management Guide"Nick Chick" 2019			
	Ab 20. Alterswoche				1000	Stück		Eingabe für Graphik:	
	Bis 72. Alterswoche				919	Stück		Berechnung	
	LL Guide	LL Hoch	Mortalität	Mortalität	LL Guide	LL Hoch	Bestandeskorrektur	Futtertage: Mittel Anfang u. Ende berechnet!	Eizahl pro AH hoch, kumuliert
Korr.		2.0					Zelle"G2"abz. Spalte "E"		
AW	in %	in %	in %	in Stück	in Stück	in Stück	in Stück	FT	
60	93.3	95.3	4.10	41.0	6'266	6'401	959	6'717	257.27
61	93.0	95.0	4.20	42.0	6'240	6'374	958	6'710	263.51
62	92.8	94.8	4.30	43.0	6'220	6'354	957	6'703	269.73
63	92.4	94.4	4.40	44.0	6'187	6'321	956	6'696	275.92
64	92.1	94.1	4.50	45.0	6'160	6'294	955	6'689	282.08
65	91.8	93.8	4.60	46.0	6'134	6'267	954	6'682	288.21
66	91.4	93.4	4.70	47.0	6'100	6'234	953	6'675	294.31
67	91.0	93.0	4.80	48.0	6'067	6'201	952	6'668	300.38
68	90.6	92.6	4.90	49.0	6'034	6'168	951	6'661	306.42
69	90.2	92.2	5.00	50.0	6'001	6'135	950	6'654	312.42
70	89.7	91.7	5.10	51.0	5'962	6'095	949	6'647	318.38
71	89.3	91.3	5.20	52.0	5'929	6'062	948	6'640	324.31
72	88.8	90.8	5.30	53.0	5'890	6'022	947	6'633	330.20
73	88.3	90.3	5.40	54.0	5'850	5'983	946	6'626	336.05
74	87.7	89.7	5.50	55.0	5'804	5'937	945	6'619	341.85
75	87.2	89.2	5.60	56.0	5'765	5'897	944	6'612	347.62
76	86.6	88.6	5.70	57.0	5'719	5'852	943	6'605	353.34
77	86.0	88.0	5.80	58.0	5'674	5'806	942	6'598	359.01
78	85.3	87.3	5.90	59.0	5'622	5'754	941	6'591	364.63
79	84.7	86.7	6.00	60.0	5'576	5'708	940	6'584	370.21
80	84.0	86.0	6.10	61.0	5'524	5'656	939	6'577	375.73
81	83.3	85.3	6.20	62.0	5'472	5'604	938	6'570	381.21
82	82.5	84.5	6.30	63.0	5'414	5'545	937	6'563	386.62
83	81.8	83.8	6.40	64.0	5'362	5'494	936	6'556	391.98
84	81.0	83.0	6.50	65.0	5'304	5'435	935	6'549	397.29
85	80.1	82.1	6.60	66.0	5'240	5'371	934	6'542	402.53
86	79.3	81.3	6.70	67.0	5'182	5'313	933	6'535	407.71
87	78.4	80.4	6.80	68.0	5'118	5'248	932	6'528	412.83
88	77.5	79.5	6.90	69.0	5'053	5'184	931	6'521	417.88
89	76.5	78.5	7.00	70.0	5'031	5'163	930	6'514	422.91
90	75.5	77.5	7.10	71.0	4'918	5'048	929	6'514	427.83
91	74.5	76.5	7.20	72.0	4'847	4'977	928	6'507	432.68
92	73.5	75.5	7.30	73.0	4'777	4'907	927	6'500	437.45
93	72.4	74.4	7.40	74.0	4'701	4'830	926	6'493	442.15
94	71.3	73.3	7.50	75.0	4'624	4'754	925	6'486	446.78
95	70.1	72.1	7.60	76.0	4'541	4'671	924	6'479	451.32
96	68.9	70.9	7.70	77.0	4'459	4'588	923	6'472	455.78
97	67.7	69.7	7.80	78.0	4'376	4'506	922	6'465	460.15
98	66.4	68.4	7.90	79.0	4'288	4'417	921	6'458	464.44
99	65.1	67.1	8.00	80.0	4'199	4'328	920	6'451	468.64
100	63.8	65.8	8.10	81.0	4'129	4'258	919	6'442	472.77
Total	86.9	88.9	87.9	81.0	472'770	483'654		544'205	
	Legeleistung pro Anfangsh. / Stk.				473	484			

Legeleistungskurve

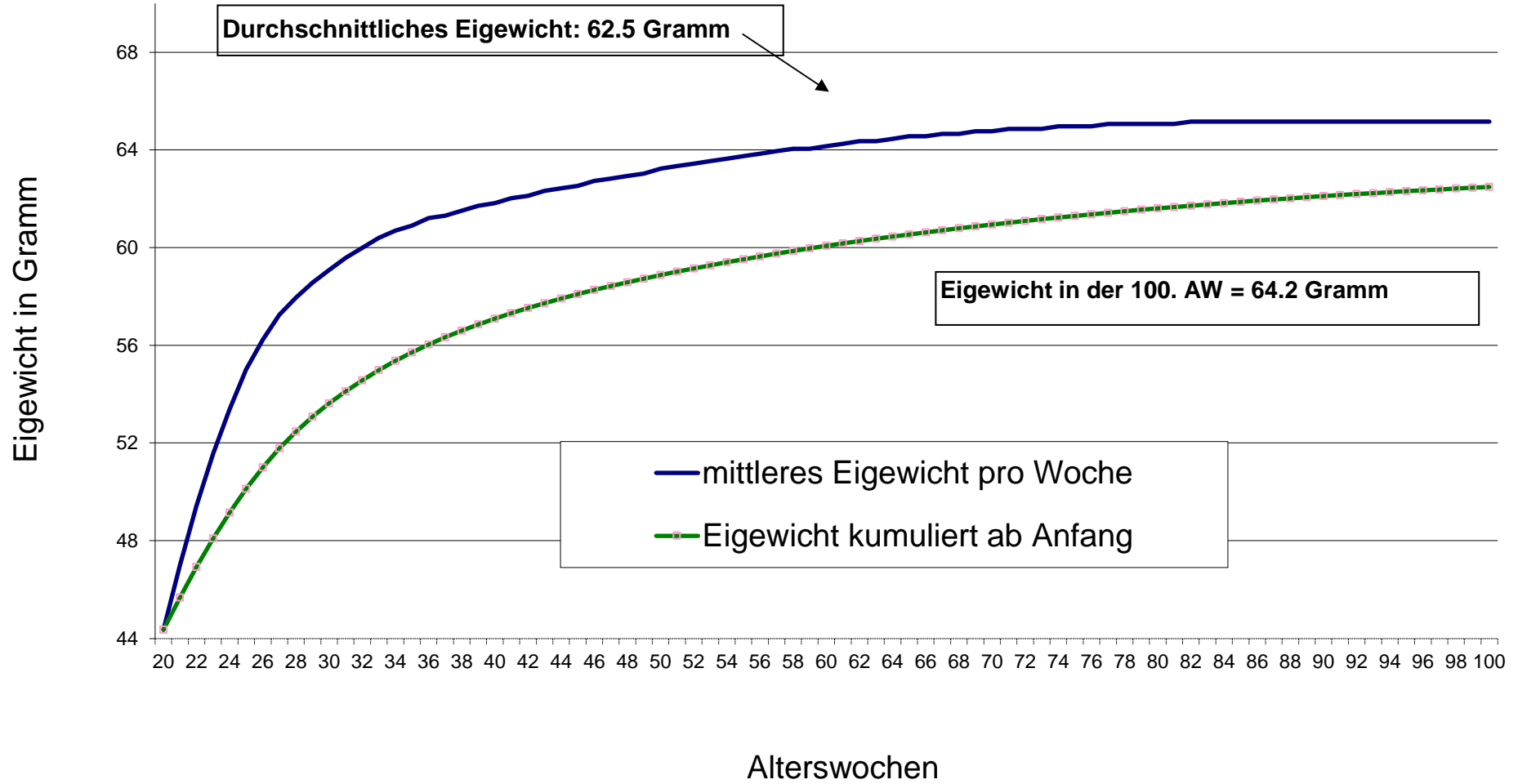


Anteil Eier pro Klassierung



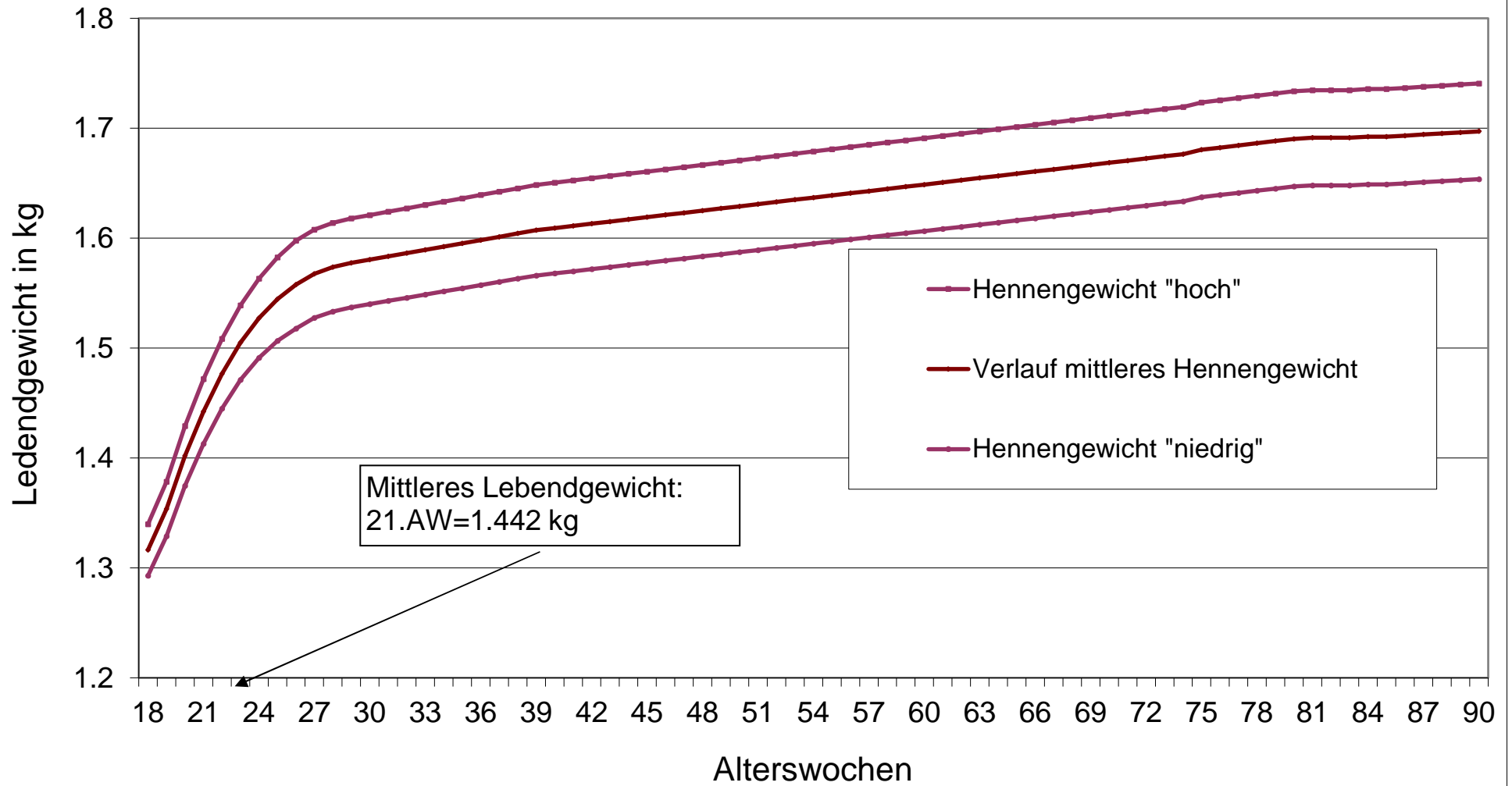
Leistungsdaten: H&N Nick Chick HN				Aktualisiert: Juli 17/ MW								
Eingabe für Graphik: H&N Nick Chick 2019				Ei-Klassierung								
AW	Eigewicht Original Nick Chick	mittleres Eigewicht pro Woche	Eigewicht kumuliert ab Anfang	Klasse XXS bis 46.9 gr	Klasse XS 47 bis 49.9 gr	Klasse S 50 bis 52.9 gr	Klasse M 53 bis 59.9 gr	Klasse M 60 bis 62.9 gr	Klasse L 63 bis 69.9 gr	Klasse XL 70 bis 79.9 gr	Klasse XXL 80+gr	Kontrolle
Faktor	Gramm	1.015		43.5	48.5	51.5	56.5	61.5	66.5	75.0	81.0	
				in %	in %	in %	in %	in %	in %	in %	in %	Total
20	43.7	44.4	44.4	100.0	0.0	0.0	0.0	0.0	0.0	0.0	0.0	100.0
21	46.3	47.0	45.7	45.0	50.0	5.0	0.0	0.0	0.0	0.0	0.0	100.0
22	48.7	49.4	46.9	10.0	45.0	45.0	0.0	0.0	0.0	0.0	0.0	100.0
23	50.8	51.6	48.1	5.0	20.0	60.0	15.0	0.0	0.0	0.0	0.0	100.0
24	52.6	53.4	49.1	4.0	10.0	50.0	36.0	0.0	0.0	0.0	0.0	100.0
25	54.2	55.0	50.1	2.0	6.0	40.0	50.0	0.0	2.0	0.0	0.0	100.0
26	55.4	56.2	51.0	1.0	5.0	20.0	74.0	0.0	0.0	0.0	0.0	100.0
27	56.4	57.2	51.8	1.0	4.0	13.0	82.0	0.0	0.0	0.0	0.0	100.0
28	57.1	58.0	52.5	1.0	2.0	4.0	83.0	10.0	0.0	0.0	0.0	100.0
29	57.7	58.6	53.1	0.0	1.0	4.0	77.0	18.0	0.0	0.0	0.0	100.0
30	58.2	59.1	53.6	0.0	0.0	4.0	66.0	30.0	0.0	0.0	0.0	100.0
31	58.7	59.6	54.1	0.0	0.0	3.0	60.0	33.0	4.0	0.0	0.0	100.0
32	59.1	60.0	54.6	0.0	0.0	3.0	53.0	40.0	4.0	0.0	0.0	100.0
33	59.5	60.4	55.0	0.0	0.0	2.0	45.0	47.0	6.0	0.0	0.0	100.0
34	59.8	60.7	55.4	0.0	0.0	2.0	39.0	51.0	8.0	0.0	0.0	100.0
35	60.0	60.9	55.7	0.0	0.0	1.0	35.0	55.0	9.0	0.0	0.0	100.0
36	60.3	61.2	56.0	0.0	0.0	1.0	30.0	58.0	11.0	0.0	0.0	100.0
37	60.4	61.3	56.3	0.0	0.0	1.0	25.0	63.0	11.0	0.0	0.0	100.0
38	60.6	61.5	56.6	0.0	0.0	1.0	23.0	65.0	11.0	0.0	0.0	100.0
39	60.8	61.7	56.9	0.0	0.0	1.0	22.0	65.0	12.0	0.0	0.0	100.0
40	60.9	61.8	57.1	0.0	0.0	1.0	18.0	68.0	13.0	0.0	0.0	100.0
41	61.1	62.0	57.3	0.0	0.0	1.0	16.0	70.0	13.0	0.0	0.0	100.0
42	61.2	62.1	57.5	0.0	0.0	1.0	14.0	70.0	15.0	0.0	0.0	100.0
43	61.4	62.3	57.7	0.0	0.0	0.0	14.0	70.0	16.0	0.0	0.0	100.0
44	61.5	62.4	57.9	0.0	0.0	0.0	12.0	72.0	16.0	0.0	0.0	100.0
45	61.6	62.5	58.1	0.0	0.0	0.0	10.0	72.0	18.0	0.0	0.0	100.0
46	61.8	62.7	58.3	0.0	0.0	0.0	9.0	72.0	19.0	0.0	0.0	100.0
47	61.9	62.8	58.4	0.0	0.0	0.0	8.0	72.0	20.0	0.0	0.0	100.0
48	62.0	62.9	58.6	0.0	0.0	0.0	8.0	70.0	22.0	0.0	0.0	100.0
49	62.1	63.0	58.7	0.0	0.0	0.0	7.0	67.0	25.0	1.0	0.0	100.0
50	62.3	63.2	58.9	0.0	0.0	0.0	7.0	65.0	27.0	1.0	0.0	100.0
51	62.4	63.3	59.0	0.0	0.0	0.0	6.0	66.0	26.0	2.0	0.0	100.0
52	62.5	63.4	59.1	0.0	0.0	0.0	6.0	63.0	29.0	2.0	0.0	100.0
53	62.6	63.5	59.3	0.0	0.0	0.0	5.0	62.0	31.0	2.0	0.0	100.0
54	62.7	63.6	59.4	0.0	0.0	0.0	5.0	63.0	30.0	2.0	0.0	100.0
55	62.8	63.7	59.5	0.0	0.0	0.0	4.0	62.0	31.0	3.0	0.0	100.0
56	62.9	63.8	59.6	0.0	0.0	0.0	4.0	61.0	32.0	3.0	0.0	100.0
57	63.0	63.9	59.8	0.0	0.0	0.0	2.0	60.0	35.0	3.0	0.0	100.0
58	63.1	64.0	59.9	0.0	0.0	0.0	2.0	58.0	37.0	3.0	0.0	100.0
59	63.1	64.0	60.0	0.0	0.0	0.0	2.0	56.0	39.0	3.0	0.0	100.0
60	63.2	64.1	60.1	0.0	0.0	0.0	2.0	55.0	40.0	3.0	0.0	100.0
61	63.3	64.2	60.2	0.0	0.0	0.0	2.0	54.0	40.0	4.0	0.0	100.0
62	63.4	64.4	60.3	0.0	0.0	0.0	2.0	52.0	42.0	4.0	0.0	100.0
63	63.4	64.4	60.4	0.0	0.0	0.0	2.0	52.0	42.0	4.0	0.0	100.0
64	63.5	64.5	60.4	0.0	0.0	0.0	2.0	50.0	44.0	4.0	0.0	100.0
65	63.6	64.6	60.5	0.0	0.0	0.0	2.0	49.0	45.0	4.0	0.0	100.0
66	63.6	64.6	60.6	0.0	0.0	0.0	2.0	48.0	46.0	4.0	0.0	100.0
67	63.7	64.7	60.7	0.0	0.0	0.0	2.0	46.0	48.0	4.0	0.0	100.0
68	63.7	64.7	60.8	0.0	0.0	0.0	2.0	45.0	49.0	4.0	0.0	100.0
69	63.8	64.8	60.9	0.0	0.0	0.0	2.0	45.0	49.0	4.0	0.0	100.0
70	63.8	64.8	60.9	0.0	0.0	0.0	2.0	44.0	49.0	5.0	0.0	100.0
71	63.9	64.9	61.0	0.0	0.0	0.0	2.0	43.0	50.0	5.0	0.0	100.0
72	63.9	64.9	61.1	0.0	0.0	0.0	2.0	43.0	50.0	5.0	0.0	100.0
73	63.9	64.9	61.2	0.0	0.0	0.0	1.0	43.0	51.0	5.0	0.0	100.0
74	64.0	65.0	61.2	0.0	0.0	0.0	1.0	42.0	52.0	5.0	0.0	100.0
75	64.0	65.0	61.3	0.0	0.0	0.0	1.0	42.0	52.0	5.0	0.0	100.0
76	64.0	65.0	61.4	0.0	0.0	0.0	1.0	42.0	52.0	5.0	0.0	100.0
77	64.1	65.1	61.4	0.0	0.0	0.0	1.0	42.0	52.0	5.0	0.0	100.0
78	64.1	65.1	61.5	0.0	0.0	0.0	1.0	42.0	52.0	5.0	0.0	100.0
79	64.1	65.1	61.5	0.0	0.0	0.0	1.0	42.0	52.0	5.0	0.0	100.0
80	64.1	65.1	61.6	0.0	0.0	0.0	1.0	42.0	52.0	5.0	0.0	100.0
81	64.1	65.1	61.7	0.0	0.0	0.0	1.0	42.0	52.0	5.0	0.0	100.0
82	64.2	65.2	61.7	0.0	0.0	0.0	1.0	42.0	52.0	5.0	0.0	100.0
83	64.2	65.2	61.8	0.0	0.0	0.0	1.0	42.0	52.0	5.0	0.0	100.0
84	64.2	65.2	61.8	0.0	0.0	0.0	1.0	42.0	52.0	5.0	0.0	100.0
85	64.2	65.2	61.9	0.0	0.0	0.0	1.0	42.0	52.0	5.0	0.0	100.0
86	64.2	65.2	61.9	0.0	0.0	0.0	1.0	42.0	52.0	5.0	0.0	100.0
87	64.2	65.2	62.0	0.0	0.0	0.0	1.0	42.0	52.0	5.0	0.0	100.0
88	64.2	65.2	62.0	0.0	0.0	0.0	1.0	42.0	52.0	5.0	0.0	100.0
89	64.2	65.2	62.1	0.0	0.0	0.0	1.0	42.0	52.0	5.0	0.0	100.0
90	64.2	65.2	62.1	0.0	0.0	0.0	1.0	42.0	52.0	5.0	0.0	100.0
91	64.2	65.2	62.1	0.0	0.0	0.0	1.0	42.0	52.0	5.0	0.0	100.0
92	64.2	65.2	62.2	0.0	0.0	0.0	1.0	42.0	52.0	5.0	0.0	100.0
93	64.2	65.2	62.2	0.0	0.0	0.0	1.0	42.0	52.0	5.0	0.0	100.0
94	64.2	65.2	62.3	0.0	0.0	0.0	1.0	41.0	52.0	6.0	0.0	100.0
95	64.2	65.2	62.3	0.0	0.0	0.0	1.0	41.0	52.0	6.0	0.0	100.0
96	64.2	65.2	62.3	0.0	0.0	0.0	1.0	41.0	52.0	6.0	0.0	100.0
97	64.2	65.2	62.4	0.0	0.0	0.0	1.0	40.0	53.0	6.0	0.0	100.0
98	64.2	65.2	62.4	0.0	0.0	0.0	1.0	39.0	54.0	6.0	0.0	100.0
99	64.2	65.2	62.4	0.0	0.0	0.0	1.0	38.0	55.0	6.0	0.0	100.0
100	64.2	65.2	62.5	0.0	0.0	0.0	1.0	38.0	55.0	6.0	0.0	100.0
Summe	4986.2	5061.0		169.0	143.0	263.0	1028.0	3641.0	2630.0	226.0	0.0	
Anzahl	81	81		81	81	81	81	81	81	81	81	
	61.6	62.5		2.1	1.8	3.2	12.7	45.0	32.5	2.8	0.0	100.0
Korrektur auf:> 73 Gramm				Klasse bis 46.9 gr.	Klasse 47-49.9 gr.	Klasse 50-52.9 gr.	Klasse 53-59.9 gr.	Klasse 60-62.9 gr.	Klasse 63-69.9 gr.	Klasse 70-79.9 gr.	Klasse über 80 gr.	
Korrektur Gewichtung				2.1	1.8	3.2	12.7	45.0	32.5	2.8	0.0	100.0

Eigewichtsentwicklung

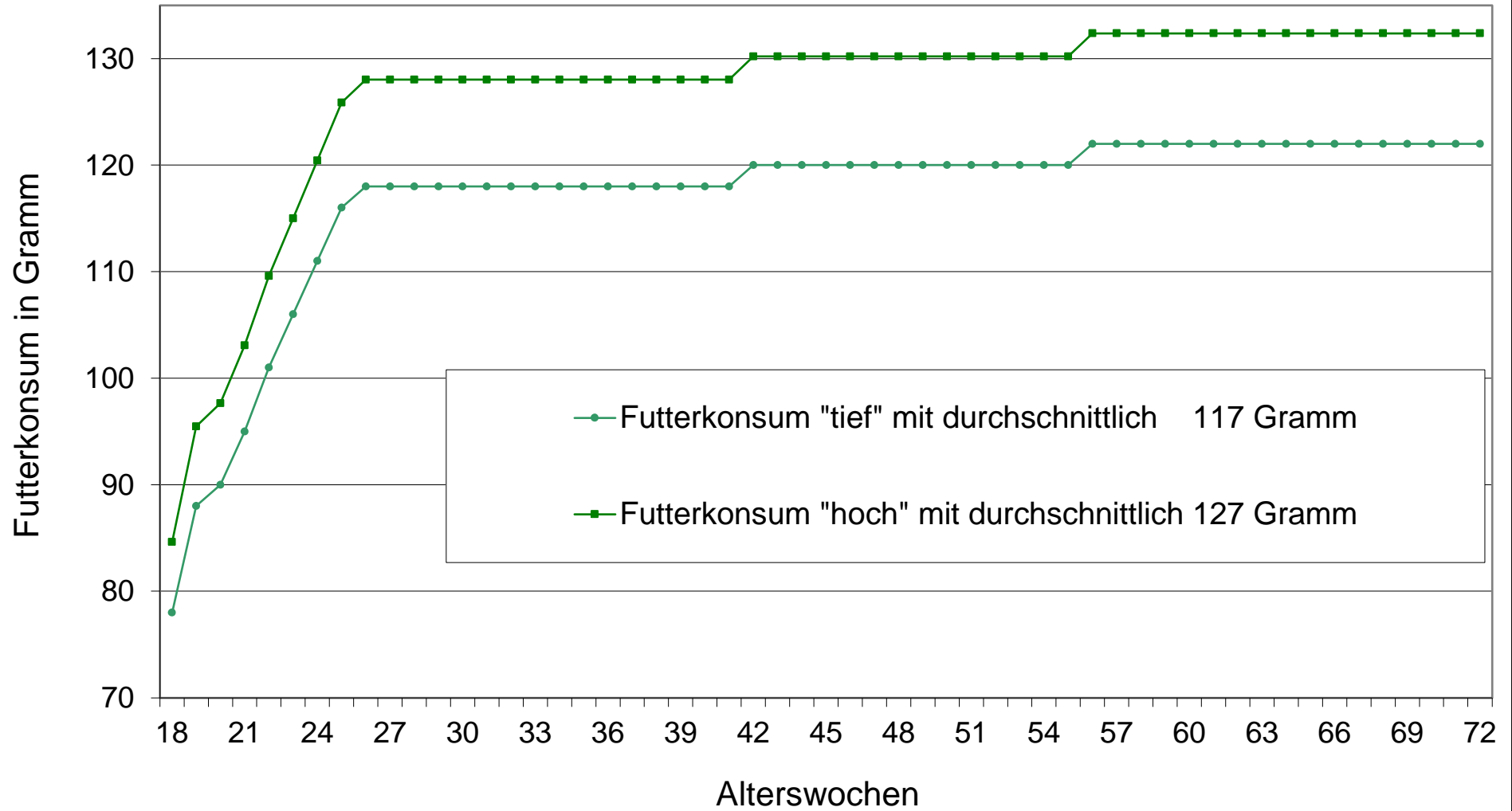


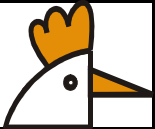
Leistungsdaten: H&N Nick Chick HN			Aktualisiert: Juli 19 /MW			
Erfassung des Lebendgewichtes						
Eingabe für Graphik			Berechnung Mittel	Mittel B +C	Korrektur Niedrig	Korrektur
AW	Guide Nick Chick, Original	1.03	Verlauf mittleres Hennengewicht	Hennengewicht "hoch"	Hennengewicht "niedrig"	Faktor in %
18	1.320	1.360	1.316	1.340	1.293	3.50
19	1.358	1.399	1.354	1.378	1.329	3.60
20	1.408	1.450	1.402	1.429	1.375	3.80
21	1.450	1.494	1.442	1.472	1.413	4.00
22	1.486	1.531	1.477	1.508	1.445	4.20
23	1.516	1.561	1.505	1.539	1.471	4.40
24	1.540	1.586	1.527	1.563	1.491	4.60
25	1.559	1.606	1.544	1.582	1.506	4.80
26	1.574	1.621	1.558	1.598	1.518	5.00
27	1.584	1.632	1.568	1.608	1.527	5.00
28	1.590	1.638	1.574	1.614	1.533	5.00
29	1.594	1.642	1.577	1.618	1.537	5.00
30	1.597	1.645	1.580	1.621	1.540	5.00
31	1.600	1.648	1.583	1.624	1.543	5.00
32	1.603	1.651	1.586	1.627	1.546	5.00
33	1.606	1.654	1.589	1.630	1.549	5.00
34	1.609	1.657	1.592	1.633	1.551	5.00
35	1.612	1.660	1.595	1.636	1.554	5.00
36	1.615	1.663	1.598	1.639	1.557	5.00
37	1.618	1.667	1.601	1.642	1.560	5.00
38	1.621	1.670	1.604	1.645	1.563	5.00
39	1.624	1.673	1.607	1.648	1.566	5.00
40	1.626	1.675	1.609	1.650	1.568	5.00
41	1.628	1.677	1.611	1.652	1.570	5.00
42	1.630	1.679	1.613	1.654	1.572	5.00
43	1.632	1.681	1.615	1.656	1.574	5.00
44	1.634	1.683	1.617	1.659	1.576	5.00
45	1.636	1.685	1.619	1.661	1.578	5.00
46	1.638	1.687	1.621	1.663	1.579	5.00
47	1.640	1.689	1.623	1.665	1.581	5.00
48	1.642	1.691	1.625	1.667	1.583	5.00
49	1.644	1.693	1.627	1.669	1.585	5.00
50	1.646	1.695	1.629	1.671	1.587	5.00
51	1.648	1.697	1.631	1.673	1.589	5.00
52	1.650	1.700	1.633	1.675	1.591	5.00
53	1.652	1.702	1.635	1.677	1.593	5.00
54	1.654	1.704	1.637	1.679	1.595	5.00
55	1.656	1.706	1.639	1.681	1.597	5.00
56	1.658	1.708	1.641	1.683	1.599	5.00
57	1.660	1.710	1.643	1.685	1.601	5.00
58	1.662	1.712	1.645	1.687	1.603	5.00
59	1.664	1.714	1.647	1.689	1.605	5.00
60	1.666	1.716	1.649	1.691	1.606	5.00
61	1.668	1.718	1.651	1.693	1.608	5.00
62	1.670	1.720	1.653	1.695	1.610	5.00
63	1.672	1.722	1.655	1.697	1.612	5.00
64	1.674	1.724	1.657	1.699	1.614	5.00
65	1.676	1.726	1.659	1.701	1.616	5.00
66	1.678	1.728	1.661	1.703	1.618	5.00
67	1.680	1.730	1.663	1.705	1.620	5.00
68	1.682	1.732	1.665	1.707	1.622	5.00
69	1.684	1.735	1.667	1.709	1.624	5.00
70	1.686	1.737	1.669	1.711	1.626	5.00
71	1.688	1.739	1.670	1.713	1.628	5.00
72	1.690	1.741	1.672	1.715	1.630	5.00
73	1.692	1.743	1.674	1.717	1.632	5.00
74	1.694	1.745	1.676	1.719	1.633	5.00
75	1.698	1.749	1.680	1.723	1.637	5.00
76	1.700	1.751	1.682	1.726	1.639	5.00
77	1.702	1.753	1.684	1.728	1.641	5.00
78	1.704	1.755	1.686	1.730	1.643	5.00
79	1.706	1.757	1.688	1.732	1.645	5.00
80	1.708	1.759	1.690	1.734	1.647	5.00
81	1.709	1.760	1.691	1.735	1.648	5.00
82	1.709	1.760	1.691	1.735	1.648	5.00
83	1.709	1.760	1.691	1.735	1.648	5.00
84	1.710	1.761	1.692	1.736	1.649	5.00
85	1.710	1.761	1.692	1.736	1.649	5.00
86	1.711	1.762	1.693	1.737	1.650	5.00
87	1.712	1.763	1.694	1.738	1.651	5.00
88	1.713	1.764	1.695	1.739	1.652	5.00
89	1.714	1.765	1.696	1.740	1.653	5.00
90	1.715	1.766	1.697	1.741	1.654	5.00
Summe	119.5	123.1	118.3	121.3	115.3	
Mittelwert	1.683	1.734	1.667	1.709	1.625	

Lebendgewichtsentwicklung Legehennen



Futterkonsum Legehennen



			
Leistungskennzahlen von H&N Nick Chick			
Aufzucht:			
Lebensfähigkeit	97.5 - 98.5	%	
Futtermittelverbrauch	6.000	kg	
Mittleres Körpergewicht mit 18 Wochen	1.316	kg	

Legeperiode: (Daten bis zur 72. Alterswoche)

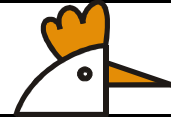
Eierproduktion		
Legeleistung bei 50 %	21	Alterswoche
Spitzenleistung von > 90 %	25. - 57.	Alterswoche
Anzahl Eier je Anfangshenne	330	Stück
Durchschnittliche Legeleistung in %	90.5	%

Legeleistung in der 72. Alterswoche	88.8	%
Mittleres Eigewicht (über die ganze Legeperiode)	62.3	Gramm
Eigewicht in der 32. Alterswoche	59.1	Gramm
Eigewicht in der 72. Alterswoche	63.9	Gramm

Hennendaten		
Lebensfähigkeit	94.5 - 96.0	%
Mittleres Körpergewicht in der 21. Alterswoche	1.450	kg
Mittleres Körpergewicht in der 72. Alterswoche	1.690	kg

Futterdaten		
Futteraufnahme pro Tag	117 - 127	Gramm
Futteraufwand pro Ei	134 - 145	Gramm

Ei-Qualität		
Schalenbruchfestigkeit	gut	
Haugh Units in der 32. Alterswoche	90	Einheiten
Haugh Units in der 72. Alterswoche	75	Einheiten



Leistungsvorgaben: H&N Nick Chick

Aktualisiert: Juni 19/MW

Alterswoche	Eizahl pro AH "hoch" (kumuliert)	Legeleistung pro Woche "hoch"	Eigewicht pro Woche	Eigewicht ab Anfang (kumuliert)	Eimasse ab Anfang (kumuliert)
	Stück	%	Gramm	Gramm	kg
20	2	34.0	44.4	44.4	0.106
21	6	55.0	47.0	45.7	0.292
22	11	71.2	49.4	46.9	0.553
23	17	82.4	51.6	48.1	0.874
24	23	88.8	53.4	49.1	1.235
25	30	91.6	55.0	50.1	1.623
26	36	92.9	56.2	51.0	2.023
27	42	93.6	57.2	51.8	2.431
28	49	94.3	58.0	52.5	2.841
29	56	94.9	58.6	53.1	3.256
30	62	95.3	59.1	53.6	3.674
31	69	95.7	59.6	54.1	4.100
32	75	96.0	60.0	54.6	4.526
33	82	96.1	60.4	55.0	4.958
34	89	96.2	60.7	55.4	5.385
35	95	96.2	60.9	55.7	5.807
36	102	96.2	61.2	56.0	6.242
37	109	96.2	61.3	56.3	6.658
38	115	96.2	61.5	56.6	7.086
39	122	96.1	61.7	56.9	7.517
40	128	96.1	61.8	57.1	7.936
41	135	96.0	62.0	57.3	8.370
42	142	96.0	62.1	57.5	8.792
43	148	95.9	62.3	57.7	9.229
44	155	95.8	62.4	57.9	9.652
45	161	95.8	62.5	58.1	10.077
46	168	95.7	62.7	58.3	10.519
47	174	95.6	62.8	58.4	10.944
48	181	95.5	62.9	58.6	11.371
49	187	95.4	63.0	58.7	11.798
50	194	95.3	63.2	58.9	12.245
51	200	95.1	63.3	59.0	12.673
52	207	95.0	63.4	59.1	13.101
53	213	94.8	63.5	59.3	13.530
54	219	94.6	63.6	59.4	13.958
55	226	94.5	63.7	59.5	14.387
56	232	94.3	63.8	59.6	14.816
57	238	94.0	63.9	59.8	15.245
58	245	93.8	64.0	59.9	15.673
59	251	93.6	64.0	60.0	16.076
60	257	93.3	64.1	60.1	16.504
61	264	93.0	64.2	60.2	16.931
62	270	92.8	64.4	60.3	17.358
63	276	92.4	64.4	60.4	17.756
64	282	92.1	64.5	60.4	18.181
65	288	91.8	64.6	60.5	18.605
66	294	91.4	64.6	60.6	18.999
67	300	91.0	64.7	60.7	19.421
68	306	90.6	64.7	60.8	19.811
69	312	90.2	64.8	60.9	20.231
70	318	89.7	64.8	60.9	20.617
71	423	76.5	65.2	62.1	27.558
72	473	63.8	65.2	62.5	30.807